



# SAWTRY EYE

Distributed to Conington, the Giddings, Glatton, Holme, Upton, Winwick, & Sawtry

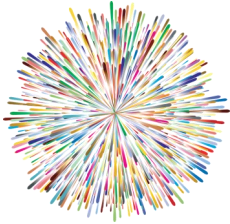
www.caresco.org.uk Price £1.00 (where bought)

No. 166 - Oct - Nov 23

## SAWTRY FIREWORK DISPLAY

Sunday 5 November at Greenfield, Straight Drove, Sawtry

**GATES OPEN: 5.30PM BONFIRE LIT: 6.30PM FIREWORKS START: 7.00PM**



The display is by CAMBRIDGE FIREWORKS

Tickets are available from:-

**K. Cooper Motors, CARESCO Charity Shop, Sawtry Parish Council Office and Best One (Post Office)**

★ ★ ★ **BBQ & Refreshments Available** ★ ★ ★

**PLEASE SUPPORT YOUR LOCAL FIREWORK DISPLAY**

Voluntarily run by Sawtry Sports & Leisure Association and in association with Sawtry Parish Council

**For more information please call 01487 831771, 07943 526379 or 07963 342737**

\*\* No fireworks to be brought into display (including sparklers) \*\*

\*\* No dumping of rubbish for the bonfire please \*\*



## Festive Wreath-Making

Learn how to create beautiful moss-based festive wreaths, enjoy a tasty hot lunch, followed by hot mince pies in the cosy atmosphere of Ferrar House.



Our tutor is the talented Florist, **Sarah Johnson**.

**Choose between:**

**Saturday 25 November at 10am**  
**Thursday 30 November at 10am**  
**Or Tuesday 5 December at 10am**

*Early booking essential as limited places are available*

**All materials are supplied**

Cost of the day including a wreath to take home:

**£55.00 per person**

**Ferrar House, Little Gidding, Huntingdon**

**Phone: 01832 293383 Email: info@ferrarhouse.co.uk**



**COFFEE ARK**

# FUNDRAISING QUIZ

**Saturday 14th October 7pm**  
Doors Open From 6:30pm

**Glatton Village Hall**

**£15 Per Person**  
(Maximum 10 Per Team - Come as a team or join one)

**Tickets Include Cheeseboard & Nibbles**  
**Book Your Tickets Today**

To book your tickets and for further information, please contact  
coffeearkcc@gmail.com  
Or call Rev Becky Dyball 07444 574039

If you are moving house, please leave a recent copy of Sawtry Eye for the new occupiers - Thank you



2023	Group	Details	Contact	Page
7 October	Sawtry & District Bowling Club	Quiz Night	07989 503740	25
7 October	Sawtry Parish Council	Sawtry Community Cafe	07841 647345	7
14 October	All Saints' Benefice	Coffee Ark - Fundraising Quiz	07444 574039	Front Page
20 October	CARESCO	GEDC Quiz Supper	01487 832105	16
20 October	North Cambridgeshire & Peterborough Care Partnership	Spotlight on Sawtry	aimee.phillips@nhs.net	27
27 October	CARESCO	Charity Shop Fashion Show	01487 208026	4
4 November	Sawtry Parish Council	Sawtry Community Cafe	07841 647345	7
5 November	CARESCO	Hamper Sale	01487 208026	5
5 November	Sawtry Parish Council	Sawtry Firework Display	01487 831771	Front Page
5 November	CARESCO	Prize Bingo	01487 832105	16
11 November	Sawtry & District Bowling Club	Presentation Night & Disco	07989 503740	25
25 - 26 November	All Saints' Benefice	Christmas Tree Festival	01487 830243	6
25 / 30 November	Ferrar House	Festive Wreath-Making Courses	01832 293383	Front Page
1 December	Sawtry Chorale	Christmas Concert - Stilton	07870 248897	15
1 - 3 December	All Saints' Benefice	Christmas Tree Festival	01487 830243	6
5 December	Ferrar House	Festive Wreath-Making Course	01832 293383	Front Page
8 December	Sawtry Chorale	Christmas Concert - Sawtry	07870 248897	15
9 December	Sawtry & District Bowling Club	Christmas Bingo	07989 503740	25
16 December	CARESCO	Silent Disco	01487 832105	—
24 December	Sawtry & District Bowling Club	Christmas Eve Drinks and Games	07989 503740	25

If you would like to have a date considered for inclusion please email the details along with a contact number to [sawtryeye@caresco.org.uk](mailto:sawtryeye@caresco.org.uk) with the subject 'Make a Date' or phone us on 01487 832105 (answer phone outside office hours). We reserve the right to decide which items to include. CARESCO is not responsible for the accuracy of the above information.

Please check with the individual group concerned.



You are warmly invited to our  
**Annual Public Meeting**

On Thursday 12 October

At The CARESCO Centre  
Green End Road, Sawtry, PE28 5UX

Time 7.30pm

The AGM will be followed by a  
presentation from The Healthy You Team

Join us on the night to find out more about the  
past year at CARESCO and our plans for the future

Find our latest Annual Report  
on our website following the AGM

For more information,  
please contact the CARESCO office on 01487 832105  
or [office@caresco.org.uk](mailto:office@caresco.org.uk)



CARESCO Centre, Green End Road, Sawtry, PE28 5UX  
[www.caresco.org.uk](http://www.caresco.org.uk)

## ON YOUR OWN FOR CHRISTMAS?



*Do you know what you're going to be doing  
this Christmas?*

*Are you going to be on your own?*

*Would you prefer to be with other people  
to celebrate the festivities?*

CARESCO will once again be hosting our Christmas Day Party for people in the Sawtry area who are going to be by themselves this year. Would you like to join in the fun? Space is limited, so early applications are recommended. Transport can be provided.

*For more information and an application form,  
please get in touch with*



*the CARESCO office  
on 01487 832105 or  
[office@caresco.org.uk](mailto:office@caresco.org.uk)*

**Contact details:**

Sawtry Eye  
The CARESCO Centre  
Green End Road  
Sawtry, Huntingdon  
Cambs PE28 5UX

01487 832105

Please where possible, email  
articles & letters with the subject  
"For Sawtry Eye" and enclose full  
name and postal address to:

[sawtryeye@caresco.org.uk](mailto:sawtryeye@caresco.org.uk)

Past issues can be found at  
[www.caresco.org.uk](http://www.caresco.org.uk)

**Editors**

Marina Joyce / Liz Coates

**Advertising/Sales**

Marina Joyce / Donna Green

**Design / Artwork**

Donna Green

Printed By:

**Clanpress (King's Lynn) Ltd**

**EDITORIAL POLICY SUMMARY**

- All items are included at the discretion of the editors who reserve the right to edit or refuse to print any item submitted.
- Views expressed in the Sawtry Eye are not necessarily those of the editors or CARESCO.
- Readers may be offered a right to reply where this is considered appropriate.
- The editors cannot accept any liability for omissions, errors or mistakes which occur in production.

The full Editorial Policy is available  
from the CARESCO office or  
[www.caresco.org.uk](http://www.caresco.org.uk)

For Issue No 167  
Dec 23 - Jan 24

**Advertisements by**

12 Noon on 10 November

**News Items by**

12 Noon on 17 November

**Rates for Mono**

**Eighth Page: Landscape (6.5cm x 8.5cm)**

1 Issue - £28.30

6 Issues - £141.50

Monthly SO - £12.40

**Quarter Page: Portrait (13cm x 8.5cm)**

1 Issue - £47.70

6 Issues - £238.50

Monthly SO - £20.80

**Half Page: Landscape (13cm x 17.5cm)**

1 Issue - £84.60

6 Issues - £423.00

Monthly SO - £37.00

**Full Page: Portrait (17.5cm x 26cm)**

1 Issue - £157.60

6 Issues - £788.00

Monthly SO - £68.90

\* All prices include VAT

For more information and prices for colour,  
contact the CARESCO office

# Welcome...

The time has finally come after 22 years for your editor to hang up her keyboard and call it a day.

When I started working for CARESCO in the Autumn of 2001, one of my first tasks was to produce the Oct-Nov 01 issue of the Eye along with my fellow Co-Editor, Marina and volunteer graphic designer Donna. We were new to the job and many mistakes were made along the way.

By my calculation, we have now edited and produced something in the region of 130 issues together, with Donna fully joining the team in 2012, so hopefully we have almost got the hang of it by now! It has been an honour to work together, encouraging groups and individuals to send in their items, and I've loved (almost) every minute!

Things are bound to change moving forward, but the Sawtry Eye will continue to spread local news for a good while yet.

Be good to each other

**Liz - Co-Editor**



## CARESCO

meeting needs in our local community

## SAWTRY FOODBANK



We are extremely grateful for all the donations of food we are receiving during these difficult times.

The following is a list of items we particularly need currently to make up our food parcels:

- Tinned Veg
- Tinned Fruit
- Jam
- Pasta Sauce
- Long-Life Milk
- Long-Life Fruit Juice
- Biscuits

Donations need to be well in date please. We can't accept fresh, frozen, chilled or home-made items or any alcohol.

Collection points include: CARESCO Centre, Local Churches, Sawtry Social Club, Gt Gidding Store, Sawtry Co-op Food store.

For more information please call 07743 593863

Email [foodbank@caresco.org.uk](mailto:foodbank@caresco.org.uk) or visit [www.caresco.org.uk](http://www.caresco.org.uk)



# Inside

2	Make a Date / CARESCO	17	Light And New Ventures
3	Welcome	18	Sawtry Methodist Church
	Notices / Letters	19	REMEMBRANCE
5	Sawtry Camera Club	20	Good Life - Mind
6	Christmas Tree Festival	21	Recipes
7	Sawtry Show	22	Wildlife Trust
8	Holme Youth Club	22	Sawtry Table Tennis Club
8	Sawtry History Society	23	Ki Kong Tang Soo Do
9	Quintuplication Part 17	23	Sawtry Colts
10	News From Sawtry Library	24	Sawtry Golf Society
11	Holme Community Speedwatch	24	Sawtry Walk To Run
11	Sawtry Infant School	25	Sawtry Feast Supper
12	Sawtry Litter Pickers	25	Sawtry And District Bowling Club
12	An Eye On Nature	26	Cambs Fire And Rescue Service
13	Sawtry WI	27	Spotlight On Sawtry
13	Wellside Surgery News	28	Useful Contacts
14	The Royal British Legion, Sawtry	29-40	Advertising
15	Sawtry Chorale		
15	Sawtry Parish Council		
16	HDC Food Waste & Contamination		
17	All Saints' Parish Church & St Nicholas' Glatton		



## SCHOOL TERM DATES

### Autumn Term 2023

Half Term - 23 to 27 October

End of term 20 December

### Spring Term 2024

Start of term 4 January

Half Term - 19 to 23 February

End of term 28 March

### Summer Term 2024

Start of term 15 April

Half Term - 27 to 31 May

End of term 22 July



**NB** Academies are responsible for setting their own holiday dates and may not match those set by Cambridgeshire County Council. Schools have a number of training days available to take in addition at their discretion. Please contact your local school for more details.

Information taken from [www.cambridgeshire.gov.uk/education](http://www.cambridgeshire.gov.uk/education)



## HDC REFUSE COLLECTION

### LANDFILL WASTE (GREY)

(Week Beginning)

2, 16 & 30 October

13 & 27 November

### GARDEN WASTE (GREEN) & RECYCLING (BLUE/GREEN)

(Week Beginning)

9 & 23 October

6 & 20 November

To find out your exact dates or for more information visit <http://www.huntsdc.gov.uk>



Your Kind of Music presents

## 'Stilton in Tune'

Our monthly concerts continue and we sincerely hope that you can join us at some time.

**Sunday 1 October** John Cooper

**Sunday 5 November** Duet Show with Chris & Jo Powell

**Sunday 3 December** Matthew Bason

All shows commence at 2.30pm (doors open 1.45pm) at Stilton Pavilion, High Street, Stilton, PE3 7RA

Finishes around 5pm with 30 minute refreshment break and raffle

Entrance £10 on the door with refreshments included Raffle, with excess proceeds to Magpas Air Ambulance

### Support live music!

More details will be provided on Facebook pages for the area.

For further details please contact Tony Oliver on 01480 474282 or 07918 602600 or email [tony.oliver5@btinternet.com](mailto:tony.oliver5@btinternet.com)



## SOUNDS GOOD

Come and join us for all things musical and the spoken word

We meet on the 2<sup>nd</sup> and 4<sup>th</sup> Fridays of the month, from 1.30 to 3pm At the CARESCO Centre

13 & 27 October  
10 & 24 November

**CARESCO**  
meeting needs in our local community

Please contact the CARESCO office on 01487 832105 for information

There is a charge of £2.00 per session, refreshments included

## CHARITY SHOP FASHION SHOW



Friday 27 October  
7.30pm (8pm start) until 10.30pm

At the CARESCO Centre

We will be modelling outfits from the Charity Shop and there will be a chance to buy them at the end of the evening. We will also be holding a raffle during the evening. There will be refreshments for sale but if people would like to have a glass of wine, beer etc they are welcome to bring their own.

Entry will be free but only with a ticket (due to space) these will be available to collect at the Charity Shop from the beginning of October, when they are gone they're gone!

It will be a fun evening!

For more information, call the Charity Shop on 01487 208026

**CARESCO**  
meeting needs in our local community



Saturday 14 October, 4.00 - 6.00pm  
Saturday 18 November, 4.00 - 6.00pm  
Saturday 16 December, 4.00 - 6.00pm

At All Saints' Church,  
Church Causeway, Sawtry, PE28 5RD

Bible themed activities and crafts, story and song, followed by supper.

Messy Church is for all ages and families of all shapes and sizes!

If under 16, you will need to bring an adult with you

To find out more, contact Ali Scott [childrensministry@allsaintssawtry.org.uk](mailto:childrensministry@allsaintssawtry.org.uk) or go to our website: [www.allsaintssawtry.org.uk](http://www.allsaintssawtry.org.uk)

Otherwise just turn up!  
No charge, but donations welcomed

We look forward to seeing you!

## SAWTRY CAMERA CLUB

The Camera Club meets once a month, on the third Thursday of the month, at the Sawtry Social Club in Gidding Road, 7.30pm start.

The members have a variety and a wide range of different makes and types of cameras.

So if you would like to join us you might have a bridge camera or a small digital or maybe use the camera on your phone, it doesn't matter all are welcome. You must download your images to a USB stick.

If you would like to join us, please email me at [sawtrycameraclub@gmail.com](mailto:sawtrycameraclub@gmail.com) and each month you will be sent the subject title for the monthly meeting.

Looking forward to hearing from you.

**Neville Diss**



## CHATTERBOX

**Drop-in sessions  
for family carers**

A friendly drop-in  
where you can get help.



Chat & relax  
over a cuppa.  
Guest speakers  
& Carers  
Assessments

**Every 2<sup>nd</sup> & 4<sup>th</sup> Monday**

**Come and join us**

No meeting on Bank Holidays

**9 & 23 October  
13 & 27 November**

At the CARESCO Centre,  
Green End Road,  
Sawtry, PE28 5UX

**For more information email:  
[office@caresco.org.uk](mailto:office@caresco.org.uk)**

**or call the  
CARESCO Office  
01487 832105**

**CARESCO**  
meeting needs in our local community

## SAWTRY CRAFT BUDDIES

**\*Please be aware of a change  
to our meetings\***



**We now meet on the second  
Thursday of every month  
at Sawtry Social Club from 7 - 9pm**

We are a small social group who love to craft.  
There are hot & cold drinks  
available to buy at the bar  
and excellent lighting for working in

Bring your own craft or just come for a chat



**Any queries please contact  
Karena on 01487 830601**

## CHARITY SANTA RUN

Sunday  
3 December

[sawtrywalktorun.co.uk](http://sawtrywalktorun.co.uk)



## SAWTRY FOODBANK HARVEST FESTIVALS



*If your organisation is planning a collection for  
our foodstore during your Harvest  
Festival celebrations,  
we ask for any non-perishable  
food items from our list  
on page 3 please.*



*For more information call 07743 593863*

**CARESCO**  
meeting needs in our local community

*Email: [foodbank@caresco.org.uk](mailto:foodbank@caresco.org.uk)  
or visit [www.caresco.org.uk](http://www.caresco.org.uk)*



## CHRISTMAS HAMPERS

Sunday 5 November

from 9.30am until 12.30pm at the CARESCO Centre

All made from brand new never been used items.

Both card and cash payments will be accepted.

We will also have a tombola where we will be selling three tickets for £1 and any ticket ending in 0 or 5 will win a prize!

**For more information,  
call the Charity Shop on 01487 208026**

**CARESCO**  
meeting needs in our local community

## BOOK STALL AND COFFEE MORNING At Winwick Church

Monthly, second Saturdays:  
14 October & 11 November

**10.00 till 11.30am**

The Church is open for everyone to come  
along and enjoy a cup of coffee and cake  
and browse our extensive supply  
of second-hand books

Donations invited in exchange for the above  
Proceeds to go to the Church



**For more information  
please contact :**

**Sue Fowler  
01832 293215**



## SAWTRY WI Festive Bazaar

Saturday 11 November

Doors open 11.15am till 3pm

At the WI Hall  
Gidding Road, Sawtry, PE28 5TS

**Tombola, Raffle, WI Produce  
Gifts, Crafts, Fabrics, Books and more,**

**Refreshments**

No Entrance Fee

Email: [sawtrywi@gmail.com](mailto:sawtrywi@gmail.com)

Instagram: [Sawtry\\_WI](https://www.instagram.com/Sawtry_WI)

[Sawtry WI | Facebook](https://www.facebook.com/SawtryWI)

**Raising funds  
for our WI Hall**

**theWI**  
INSPIRING WOMEN

**Charity number  
229016**

## SAWTRY STEPPERS MODERN & TRADITIONAL LINE DANCE CLASSES

For Beginners / Improvers and Intermediate Dancers

Monday Mornings: 10am - 12pm

Friday Evenings: 6.30pm - 9pm

At the Old School Hall, Green End Road, Sawtry

**New:** On the first Sunday of every month we are in the hall at the Sawtry Social Club for a Linedance Workshop / Social from 2pm - 5pm. Drinks from the bar.

You don't have to be a Sawtry Stepper or Linedancer to enjoy these afternoons

**For more information contact  
Julie Gillmore**

**On 07939 070 406**

**Jcgillmore@sky.com**

**Or ask to join**

**Sawtry Steppers on Facebook**



**Line Dancing**

## LITTLE SAINTS



Every Thursday (term time)

**9 - 10:30am (doors open 8:30am)  
Held in the Methodist Church Hall,  
Green End Road, Sawtry, PE28 5UX**

A safe play space to enjoy adventures with 0 - 5 year old's and all those who care for them run by the All Saints' Church, Sawtry.

Bible Themed Crafts, Story-time, Refreshments, Singing, Prayer and lots of fun.

If you care for a little one as a parent, grandparent, carer or childminder, come along and join the fun.

**£2 donation per family**

**For more information please contact  
Alex Dyball**

**littlesaintssawtry@gmail.com  
or call 01487 506217**

*All Saints' Church Sawtry*

## Christmas Tree Festival

**Come and see the Church decorated with Christmas Trees  
created by local Organisations & Groups**

Saturday 25 November	2.00pm - 4.30pm
Friday 1 December	6.00pm - 8.30pm
Saturday 2 December	2.00pm - 4.30pm
Sunday 3 December	2.00pm - 4.30pm

*Also open by arrangement during the week  
(27 November to 1 December) for group visits.*

**Held to mark the start of Advent and the days leading up to Christmas,  
everyone is welcome!**

*This event is raising money for Addenbrooke's Charitable Trust.  
Donations will be gratefully received from those taking part and from visitors.*

**Refreshments available at all sessions**

## Upton Christmas Fayre

**Saturday 25 November  
Village Hall, Upton  
10 to 12.30pm**

Refreshments  
Bacon Rolls - Cakes

**Variety of Craft Stalls**

Everyone Welcome

[suebeck1@hotmail.com](mailto:suebeck1@hotmail.com)

07850 018876



## BENEFICE HARVEST FESTIVAL with Lunch and Produce Auction

Our Benefice Harvest Festival and Lunch is taking place over the weekend of Saturday 30 September and Sunday 1 October at St. Nicholas Church, Glatton.

The Church will be open over the weekend with stunning Harvest displays with a special service in St. Nicholas' on Sunday at 11am followed by lunch in Glatton Village Hall. You will also have a brilliant opportunity to meet the Coffee Ark which will be open all weekend.

**Reverend Becky Dyball**

**[revdyball@gmail.com](mailto:revdyball@gmail.com)**

**07444 574039 / 01487506217**



**afvbc**ARMED FORCES & VETERANS  
BREAKFAST CLUBS**SAWTRY****www.afvbc.NET**

Welcome to the Veterans  
We are a group of members of His Majesty's of a growing Clubs in the UK



Sawtry Armed Forces & Breakfast Club. veterans and serving

Armed Forces and part network of Breakfast and Worldwide.

There are no commitments or subs, just pay for your breakfast.

So come to a great place and meet like-minded people for support, chat and banter.

Our Breakfast Club meets

Every 2<sup>nd</sup> Saturday of the month  
from 09.45

at The Greystones Public House, Sawtry

Interested? Then please register on our Facebook group  
*Sawtry Armed Forces & Veterans Breakfast Club*

(<https://www.facebook.com/groups/afvbc.sawtry>) or

Email [sawtry.AFVBC@Gmail.com](mailto:sawtry.AFVBC@Gmail.com)

**SAWTRY WI****Halloween Tea****Thursday 19 October****2pm - 4pm***At the WI Hall**Gidding Road, Sawtry, PE28 5TS***Selection of Sandwiches and Cakes****Tea and Coffee****Raffle, Crafts and Books**

Entry by Ticket only - £5

**Contact Ann Watson: 01487 831397**Email: [sawtrywi@gmail.com](mailto:sawtrywi@gmail.com)Instagram: [Sawtry\\_WI](#) Sawtry WI | Facebook

Raising funds  
for our WI Hall



Charity number  
229016

**SAWTRY  
COMMUNITY CAFÉ**

Open on the first  
Saturday of each month  
**12 - 3pm**

\* **7 October & 4 November** \*

at the WI Hall, Gidding Road, Sawtry, PE28 5TS

**There is no charge for food**

Come and join us for a meal,  
a chat and receive  
a warm welcome

**We have activities, board games, magazines  
and a play area for pre-school children**

Free Wi-Fi

**Everyone Welcome**

Access to support available

**Community Meals provided by:**

*Volunteers from Sawtry WI  
and other organisations.*

**Funded by:**

*Sawtry Parish Council, Local Businesses,  
Huntingdonshire District Council  
and voluntary contributions.*

**Enquiries and donations****07841 647345****SAWTRY SHOW**

Saturday 16 September saw the return of the Sawtry Show, after a long three year break due to Covid, and you did not disappoint!



It was wonderful to see so many familiar faces, new exhibitors and visitors of ages attend our annual show. Thank you to everyone who took part and joined in the community fun, it really was fantastic to be back. We thoroughly enjoyed seeing all of the magnificent creations from our very own bakers, crafters, wine makers, artists, and gardeners,



Our community really is full of wonderful talented people. It was truly amazing to see our community coming together and enjoying the return of The Sawtry Show.

Thank you to everyone who took part in entering and those who joined us on the day to see all of the wonderful entries. A huge thank you to all of our stewards, judges, those who donated refreshments and our small army of volunteers, who without them the event would not have been possible.



Should you be interested in joining our small committee, please drop us an email: [thesawtryshow@outlook.com](mailto:thesawtryshow@outlook.com)

**For more info check out our Facebook page, "The Sawtry Show"**

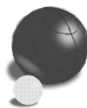
## SAWTRY INDOOR BOWLING CLUB

Tuesdays 2 - 4pm

in Sawtry Methodist Church Hall,  
9 Green End Road, Sawtry, PE28 5UX

Have you tried indoor bowling? Come and have a go. We are open to new members, no experience necessary!

**For more information  
contact Dorothy on  
07565 543189**



## VOLUNTEERS NEEDED

**Tuck Shop** - to provide bacon rolls and refreshments to the Sawtry Colts - one Saturday in four from 09.00 until 12.30, September until May at the CARESCO Centre. This will require a team of two. At least one volunteer will need a Food Hygiene & Safety certificate (an online course will be paid for by CARESCO if required).

**CARESCO Centre Garden** - to help keep on top of the weeds and general maintenance. As much time as you can spare, even if it's just an hour a week it will be greatly appreciated.

**For more details on the  
above roles please  
telephone Sharon on  
01487 802026 or email  
[sharon.dougherty@caresco.org.uk](mailto:sharon.dougherty@caresco.org.uk)**



## HOLME YOUTH CLUB

We ended last term with Mother Nature winning the water fight on our final day in July as it rained so much all day we had to abandon our plans to hold a water battle without firing a shot. Our amazing visit to Fenland Aquapark turned out to be more amazing than anticipated as a sudden gust of wind blew some of the inflatables across the lake and we had to abandon our session after 10 minutes in the water because of a torrential downpour.

As I write this summer has finally arrived, so we should have managed at least one more evening in the school field to kick off our new term in early September and hopefully we also picked up a few new members for both the club and the committee at our AGM and are ever hopeful that the re-run of the Fenland Aquapark trip was a great success, but you will have to wait till the next issue to hear about it. With the days shortening, we will be restricted to the Village Hall but we have plans afoot to utilise some outdoor space now that we are no longer able to use the enclosed area at the back of the car park.

We are planning our "night out" so let's have some suggestions of where you would like to go, but I do stress Dubai is not an option!!

Holme Youth Club membership is open to school years 5 - 10 who live in Holme or attend or have attended Holme (CofE) Primary Academy. We meet every term time Friday in the Village Hall at 6.30 to 8.30 - admission £2 and we have a subsidised tuck shop run by some of our older members. If you fit the criteria and are interested in joining us just pop along or for more information check out our website and Facebook page or email [holmeyouthclub@outlook.com](mailto:holmeyouthclub@outlook.com) for further information.

**For further information please consult  
our Facebook page @HolmeYouth  
or website [Holmeyouthclub.co.uk](http://Holmeyouthclub.co.uk)  
or email [holmeyouthclub@outlook.com](mailto:holmeyouthclub@outlook.com)**

**Renee**



## SAWTRY HISTORY SOCIETY

We are now opening the History Archive on the Saturday following our Thursday meetings, in the Community Centre access via the library, from 10:00 to 12:00.

All are welcome, search census records and view old documents relating to the Sawtry area.

The subject of our July meeting was **The Battle of Bosworth Field**, another of Don Chiswell's numerous presentations, he dismissed a few of the Shakespearean impressions of Richard and other popular myths. He talked about Richard's alleged deformities and the treachery of some of his nobles who waited for the battle to unfold before they decided which "side" to fight on. How Don gets his head around Richard's family tree is a complete mystery to me!

Our future programme:

October **The Huntingdon Cyclist Battalions**  
Presented By Martyn Smith Of The Western Front Association

November **Digging Up A Spitfire**  
Presented by James Fairbairn, Project Officer at Oxford Archaeology East

I have to point out that the address for our old website that appeared on my last report was an error. As previously explained (I hope) we no longer run our own site, one of our life members runs a website affiliated to us the details being [www.sawtryhistory.co.uk](http://www.sawtryhistory.co.uk). [sawtryhistory@gmail.com](mailto:sawtryhistory@gmail.com)

Sawtry Archaeology 'is a sub-group of Sawtry History Society. Further information can be found on the Sawtry Archaeology website at [HOME | My Site \(sawtryarchaeology.wixsite.com\)](http://HOME | My Site (sawtryarchaeology.wixsite.com)).

There is also a link to our archaeology page and you can follow us on Facebook.

**The History Society meet at 7:30pm on the third Thursday of the month  
in the Methodist Church, 9 Green End Road, PE28 5UX.**

**For info call Chris Merton 01487 831441**



## QUINTUPLICATION - PART SEVENTEEN SNIPPETS FROM PUBLISHED SAWTRY PARISH COUNCIL MINUTES 1963 - 1993

- December 1971** Road Mud. The Police were keeping an eye on this.
- May 1972** Drainage Board: Include £200 for slubbing out Black Horse Drain
- December 1972** Sawtry Fire Service asking for recruits (for new Fire Station?)
- March 1973** Children's Corner needs a fence. Three meetings later along comes an assessor. He reports: "*Something must be done*"  
Plant-a-tree year. Chairman suggested that the Council should buy a typewriter.
- August 1973** Legal ruling that all of the Green belongs to the Parish Council
- December 1973** Mrs B. tripped over a stop cock
- May 1974** Police stopped ball games on grass area, Deer Park Road.
- December 1974** Carols on the Green (annually). Splendid community teamwork:  
Mrs North gave tree, Farcet Salvation Army played, Village Collage available if wet.  
Collection for Salvation Army and Feast Supper.
- April 1975** Council unlikely to allow footbridge over A1
- November 1975** Young Farmers to build footbridge by Aversley Wood.
- January 1976** Attention of PC Smith will be drawn to the hazards presented by geese on the A1
- March 1976** Parish Hall Survey. 1200 issued, 66 returned, 46 in favour, 20 against
- May 1976** On Drainage, '*protracted discussion and concern...*'
- September 1976** A1 Signs: '*Mr Dybeck noted that the lettering for Sawtry was smaller than all other villages including Denton*'
- October 1976** Village Plan: Recreation space: two designated sites owners refused offer to purchase
- November 1976** Jubilee: Some bunting & flags will be provided. Mr Marshall pointed to possibility of economising by using coloured fertiliser bags.
- October 1979** Mr Milford reports on excavations at Sawtry Judith Manor.  
Rubbish: Mrs Custance reported on the episode of the dead pig which had, at last, been suitably interred in a ditch by St Andrew's Churchyard....Mr Duncan to give the Christmas tree. Different donors every year.
- September 1980** NUCLEAR Emergency Plan – (siting of Cruise Missiles at Molesworth?)
- October 1980** Amenities. An old well uncovered by Huntings. Mr H. diverts wall to preserve it.
- April 1981** Church & State: Mr Milford offers to restore St Andrew's Churchyard as an amenity.
- October 1981** Official (RE) opening of (re-roofed) Swimming Pool  
Mr Wick's History of Sawtry. (Where is it now?)
- May 1983** The Clerk to look into powers to ban smoking at Parish Council meetings
- April 1984** Annual Report: "*21 years since I was elected. Then: just four meetings a year. Last year I attended almost forty*" Harold Parker, Chairman.  
'*Control of Nuclear Emergency Siren is in police hands*'
- September 1984** Purchase of Computer: '*Not clear what use Council would be likely to make....*'
- January 1985** Rural Amenities. Some of the smallest trees are in the way of the toboggan run.  
Mr Tuplin will try & remove them.
- June 1985** CARESCO gets £500 from Children in Need
- July 1985** Sewage Pumping station '*Now on Full capacity*' (Built 1963, for population of 5,000)
- December 1990** '*Possibility of skips for cans, paper & plastics*' (Scouts already collecting paper & cans for years)



**Maurice Dybeck**  
**Former Sawtry resident, and first Warden at Sawtry Community College**

**Editor's note:** Our thanks to Maurice for sharing his fascinating insight into Sawtry's past with his Quintuplication series, sadly this is the last instalment.



# CHRISTMAS QUIZ SHEET

On sale from 13 November

**£1.00 PER COPY**

Available from the CARESCO Charity Shop  
and the CARESCO Centre

All proceeds to support the work of CARESCO

**Prize: Hamper of Goodies**

Closing date: Friday 12 January

**CARESCO**  
meeting needs in our local community



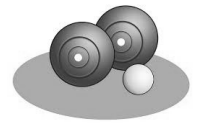
## SAWTRY AND DISTRICT BOWLING CLUB

A few social events to look forward to in the lead up to Christmas:

- ❄️ **Saturday 7 October** Quiz Night at 7.30pm
- ❄️ **Saturday 11 November** Presentation Night & Disco at 7pm
- ❄️ **Thursday 16 November** AGM at 7.15pm
- ❄️ **Saturday 9 December** Christmas Bingo at 7.30pm
- ❄️ **Sunday 24 December** Christmas Eve drinks and games at 6pm

**Any Queries contact  
Club Secretary Kevin Bowers  
Tel No 07989 503740**

**Visit our Facebook Page - search  
'Sawtry and District Bowling Club'**



## NEWS FROM SAWTRY LIBRARY

Sawtry Library offers a range of services and activities. You can use our free pcs to access the internet and you can print and photocopy for a small charge. For children we run regular sing-along sessions as well as a Lego Club. Along with a wide range of books in the library you can also use your free library account to access e-books, e-audio, newspapers, magazines and reference databases such as Encyclopaedia Britannica. You can also research your family history for free with Ancestry.com.

### **New Digital Buddy Sessions - Every Wednesday from 2.00 - 3.00pm**

If you are not confident using computers or need help finding information online or completing online forms, then come along to one of our buddying sessions. Our volunteer will be able to teach you basic computer skills and show you how to do simple online tasks. No need to make an appointment just drop in.

### **Engage Event – Family History - Wednesday 25 October from 2.30 - 3.30pm**

Researching your Family History can be an overwhelming experience. From censuses to parish registers, to legal documents, Carys Fyson from Cambridgeshire Archives will help guide you through the many records that will open up your ancestral past.

### **Summer Reading Challenge**

Congratulations to all the children who took part in this year's Summer Reading Challenge at Sawtry Library. We had almost 100 children take part and around 50 children completed the Challenge and were awarded with their certificates and medals. It was lovely to see so many children enjoying reading over the holidays.

### **Rhymetime - Wednesdays 10.30 - 11.00am (term-time only)**

Come and join in with some popular songs and rhymes at our weekly Rhymetime sessions for children under 5. FREE drop in event.

### **Lego Club - every Saturday morning from 10.00am - 12.00pm**

Get creative and constructive at our Lego Club. Drop in anytime throughout the Saturday session, Suitable for children aged 4+, 50p donation appreciated.



### **Bus Pass Assistance**

Is your Bus Pass up for renewal? Do you need to apply for your first Bus Pass? If so, pop into Sawtry Library and staff there will be happy to help you complete the online application form.

### **Social Media**

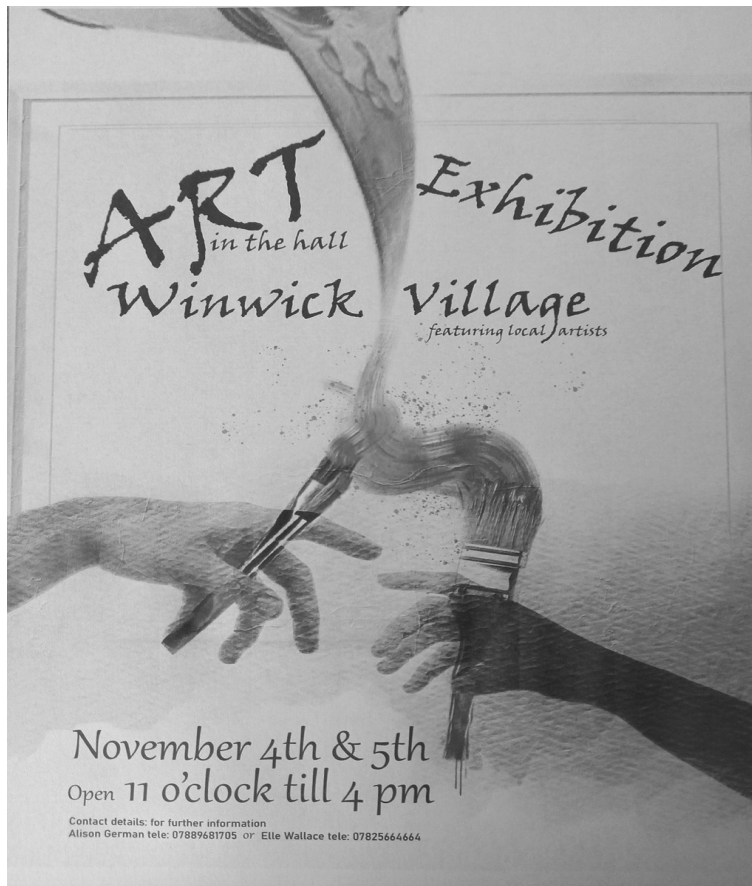
Please look at our social media pages for information, updates and events. You can find us on Facebook by searching for 'Cambridgeshire Libraries' and on Twitter we are @cambslib.

### **Opening Times**

Monday	Closed
Tuesday	3.00pm - 7.00pm
Wednesday	10.00am - 1.00pm; 2.00pm - 5.00pm
Thursday	Closed
Friday	3.00pm - 5.00pm
Saturday	9.30am - 12.30pm

**Paul Smith,  
District Library Assistant,  
Huntingdon, Yaxley and  
Sawtry Libraries**





## SAWTRY INFANT SCHOOL

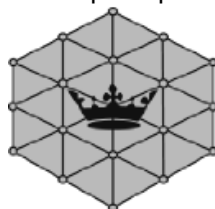
We have had a great start to the academic year and our new reception children are settling in well and enjoying being part of our infant school family. As we draw closer to Christmas we look forward to inviting you all to a Christmas Shopping Event on 7 December and enjoying a wide range of festive activities with the children including a Year 1 and Year 2 Christingle Service with our local church.

We have welcomed lots of new staff this year as our school continues to grow. We now have seven classes at our school and continue to see rising numbers. Already we have had a lot of interest in next year's reception places. We will be hosting 'Intake 2024 Open Evenings' on 10 October and 16 November from 6-7pm. If you are interested in attending one of these open evenings, please call or email the school office so that we know how many people will be attending. If you are unable to make one of these events, please contact us to arrange a suitable date and time for an alternative visit.

We are looking for governors! If you interested in contributing to school improvement and feel that you have relevant expertise please get in touch with the school office for an application form.

Finally, as you will know from my previous updates, we continue to have problems with parking on Middlefield Road at pick and drop off times. We would like to politely remind everyone to be courteous towards our neighbours by avoiding parking across driveways. Please ensure that you are parked safely and legally. Our joint application with Sawtry Junior Academy for time restricted lines has been submitted and is currently being processed. Once it has been finalised, we will share what this will look like and how it should help keep our streets around school quieter.

**Mrs Trace**  
**Headteacher,**  
**Sawtry Infant School**  
**01487 830678**  
**[office@sawtry-inf.cambs.sch.uk](mailto:office@sawtry-inf.cambs.sch.uk)**



## HOLME COMMUNITY SPEEDWATCH



After a rather dismal summer which, bizarrely, has seen a huge drop in the amount of through traffic and, consequently, speeders, September brought the summer and the return of the traffic and the speeders as we are once again up to 15%. As this is a great improvement on the 50% we started with our team are confident they are succeeding in their endeavours to educate drivers passing through our village.

It is really heartening to get people from outside our village who are interested in joining our team as there isn't one in their immediate area, or are asking for advice about starting their own team in their area. We can pass on the full guidance details of how it all works and answer any questions you may have but we then pass you onto Cambridgeshire Police who will assist with training and/or setting up your scheme.

If you can spare 1.5 hours a month and are interested in helping out with our campaign please email [csw.holme@btinternet.com](mailto:csw.holme@btinternet.com) and we can give you the full details and arrange your training and welcome you to our team.

**PLEASE SLOW DOWN THROUGH OUR VILLAGES**

## A TIME FOR MEMORIES

### Christians Together in Sawtry



will hold their annual service of commemoration and thanksgiving, to remember loved ones who have died

**On Sunday 5 November at 3.30pm**

**at the Methodist Church  
 9 Green End Road, Sawtry**

All are welcome to this simple but moving service, which will be followed by refreshments and a chance to chat

**For more information, please contact one of the churches, details on pages 17 or 18**

### SAWTRY WI HALL Available for Hire

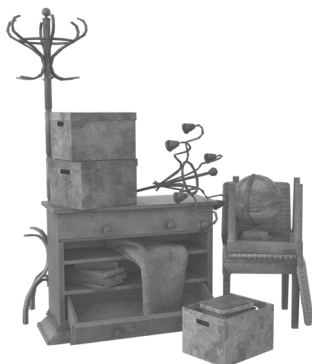
Gidding Road, Sawtry PE28 5TS  
 Regular or occasional events welcome  
 Recently refurbished, accessible, clean and bright kitchen, new fridge, microwave, outdoor space, excellent lighting, Wi-Fi - Capacity 70

**[sawtrywihall@gmail.com](mailto:sawtrywihall@gmail.com)**  
**Instagram: [Sawtry\\_WI\\_Hall](#)**  
**Sawtry WI Hall | Facebook**

## SAWTRY LITTER PICKERS

Sawtry Litter Pickers like to keep a positive outlook, so we focus on the amazing team who continue to pick up litter throughout Sawtry and the surrounding areas.

Some members' grandchildren even joined in during the summer holidays, their grins and enthusiasm put a smile on our faces, pictures are on our Facebook page. We managed to cover the whole village during August and will try to do so a couple of times a year, unfortunately some areas just need continuous clearing and take up a lot of our time.



The fly-tipping has just been shocking these past couple of months, two fridges just dumped on Fen Lane, one high chair on St Judith's, a pallet, a footstool and lots more on Bill Hall Way and it just continues. Luckily we have Huntingdonshire District Council who receive the fly-tipping report and are very quick to remove.

There is also a large amount of rubbish continually dumped on the old A1, towards Conington, which we have reported, however it is classed as private land so HDC are not responsible. That leaves the question who is ..... is it the landowners who have to pay for it to be removed, how can this be so when it is obviously a criminal offence and leaving it there to fester just encourages more waste and danger to our wildlife.

Bill Hall Way continues to be a major issue and we are clearing it regularly, so would be in a shocking state if we didn't regularly collect. We have a local businessman who is interested in sponsoring a "Litter Picker Board and equipment" where

passer-by's could help themselves to a litter picker and just collect a couple of items, would be really good for Bill Hall Way but further discussions are also needed with Sawtry Parish Council for permission and location.

The grass cutting is still causing us major headaches, as one piece of litter multiples when it has been through a lawn mower. It is not the contractors' fault however there is the danger of the sharp cans and broken bottles that create such a health issue to people and animals alike, but with budget cuts and rising prices there does not seem to be a solution and it seems to be left to us to pick up the pieces.

Our team of volunteers go collecting week in and week out, we have our grumbles and downs but we are there to support each other, as we know it will never be eradicated but all we can do is our part.

As always please get in touch if you are interested in joining our fabulous team, as there will always be a need.

**Liza Smith** [sawtrylitterpickers@yahoo.com](mailto:sawtrylitterpickers@yahoo.com)



## AN EYE ON NATURE



As a founder member of a group of friends who have met weekly for 30 years, we have together explored our amazing wildlife. We visit local, and occasionally not so local, sites to see what is about and where there is something very special, hopefully find it.

Our recent trip to Royston had been postponed several times due to poor weather this Summer, but when the conditions were finally perfect, we had a red-letter day. It was a gift that just kept on giving! I woke to blue sky in Sawtry, perfect conditions for butterflies, but a huge bank of cloud loomed in the South on the A1, not a good sign.

It was cold and grey when we reached our destination, I was however convinced the sun would eventually shine. Not to be down-hearted, we walked through the lovely Beachwood and saw the orchids the wood was famous for. Out on the heath nothing stirred, but what a find in the grass - a rare Wasp Spider. These are spectacular beasts which emigrated from Europe as the climate changed. I had only seen one before, but not this particular morning, my friend counted 29 webs in a small area, wow!

Holes started to appear in the clouds and as if by magic, butterflies took to the wing all around us. Various species were about, but not the special one we were so desperate to see. At lunchtime we made the decision to stay and as only some of us had brought a picnic we made a pit stop in a MacDonald's before going back onto the heath. Our quest continued in hot Summer sunshine perfect conditions for the rare and elusive Adonis Blue butterfly. As we climbed up passed the rugby pitch there were plenty of butterflies on the wing and then we spotted the first iridescent blue. It was unmistakably what we had come to see. But not just one appeared but lots, what a day!

The good news is that Therfield Heath has free public access with a café in one of the car parks, so anyone can marvel at nature's wonder in the Adonis Blue.

**Martin Baker**

The views expressed in this article are solely those of the author

**For more information, contact the Wildlife Trust:**

**Phone 01954 713543, or visit [www.wildlifebcn.org](http://www.wildlifebcn.org)**



WI is a national organisation open to all women. At Sawtry WI we are currently accepting new members. Guests are welcome at our monthly meetings held on the first Thursday of each month, 7pm, WI Hall, Gidding Road, Sawtry PE28 5TS. Monthly meetings start with a speaker or activity followed by refreshments and some business after which we have a raffle, competition, crafts, books and produce for sale. There is a talk by CARESCO in October, Hinduism and Indian Culture in November and a seasonal a craft demonstration in December. Please contact us if you would like a copy of our current programme. In September you may have noticed our campaign banner for our 'River of Action' week campaigning for 'Clean Rivers for People and Wildlife'.

WI offers the opportunity to make new friends, learn something and get involved in our community. Our social groups are open to any member of the community. Knit and Knatter held weekly on Wednesdays 2-4pm, Sewing, Patchwork and Quilting held on the second Monday of each month 11am-3pm and Evening Tea, Craft and Chat held on the third Thursday of the month 7-9pm. All members have access to our own on-line college as well as outings, workshops and events at WI Centre in Huntingdon. There is an alternative to attending meetings in person. 'Filoxenia Virtual WI' meets entirely via Zoom, 7.30pm on the second Monday of each month.

Tickets are now on sale for our Halloween Tea 19th October. Our Festive Bazaar is 11th November – see advertisements for both in this issue of Sawtry Eye. Sawtry Community Café continues to be a success held at Sawtry WI Hall on the first Saturday of each month where food is provided free of charge and residents come together to eat and chat.

**Jacqui Svensson, President**

[sawtrywi@gmail.com](mailto:sawtrywi@gmail.com)

Instagram: [Sawtry\\_WI](#)

Sawtry WI | Facebook

## WELLSIDE SURGERY NEWS



### Flu and Covid Booster Vaccinations

If you are eligible for a Covid vaccination you will have already been invited to book an appointment at one of the clinics being held at the practice.

If you were unable to attend one of the Covid Vaccination Clinics here at the surgery and still need to book an appointment to attend an alternative local provider you can do so via the National Booking Service:

- \* Book over the phone by calling 119
- \* Book online at <https://www.nhs.uk/nhs-services/covid-19-services/covid-19-vaccination-services/book-covid-19-vaccination/>

Our nursing team continue to provide flu vaccinations to all eligible patients. Please call our reception team on 01487 830340 to book an appointment.

### The following patients are eligible for flu vaccination:

- \* those aged 65 years and over
- \* those aged 6 months to under 65 years in clinical risk groups:
 

Chronic respiratory disease	Chronic neurological disease
Chronic heart disease and vascular disease	Diabetes
Chronic kidney disease	Obesity (BMI of 40 or above)
Chronic liver disease	Patients who are immunosuppressed
- \* pregnant women
- \* all children aged 2 or 3 years on 31 August 2023 (**we will be in touch in due course to invite this group of patients**)
- \* primary school aged children ie. from Reception to Year 6 (**these will be provide by school immunisation teams**)
- \* those in long-stay residential care homes
- \* carers in receipt of carer's allowance, or those who are the main carer of an elderly or disabled person
- \* close contacts of immunocompromised individuals
- \* frontline workers in a social care setting without an employer led occupational health scheme including those working for a registered residential care or nursing home, registered domiciliary care providers, voluntary managed hospice providers and those that are employed by those who receive direct payments (personal budgets) or Personal Health budgets, such as Personal Assistants

**Mrs Claire Wright, Practice Manager, Wellside Surgery, Sawtry - Tel: 01487 830340**

## THE ROYAL BRITISH LEGION SAWTRY & DISTRICT BRANCH

The Royal British Legion supports our Armed Forces community, including serving and ex-serving personnel and their families.

### Poppy Appeal

This year's Poppy Appeal will launch on Thursday 26 October, marking the start of our collection period that continues to Remembrance Sunday on 12 November. We are looking for more volunteers to help with door-to-door collections especially on the new housing estates. You do not need to be a member of the RBL to volunteer.

Interested? Then please consider volunteering and get in contact with Billy, details below.

Already a volunteer? I will be in touch over the next few weeks to see if you can help this year.

The 2022 Poppy Appeal officially ends on Saturday 30 September 2023, the total now stands at £9,765.95



Thank you for all your donations. ROYAL BRITISH LEGION

**For more information, please email:**  
**sawtry.secretary@rbl.community,**  
**visit our Facebook page: Sawtry RBL**  
**call Billy on 07864296519 or you can visit**  
**www.britishlegion.org.uk**



## Digital Buddy Drop Ins At Sawtry Library

Every Wednesday from Wednesday 27<sup>th</sup> September  
2.00 - 3.00pm

Do you know your emails from your Excel?  
Are you unsure how to use e-readers?  
Do you know how to find trusted information online?

If you would like to know how to do these things or if you need any other basic IT help then pop along to one of our weekly drop in sessions. Our friendly volunteer can assist and teach you basic digital skills. (Please note that we cannot help with legal or financial matters).

If you would like to know more please just ask at the library or email:  
[Huntingdon.referral@cambridgeshire.gov.uk](mailto:Huntingdon.referral@cambridgeshire.gov.uk)



## SAWTRY'S WEED WOES AND THE TRIUMPH OF THE SAWTRY 10-MILE RUN

I am sure you have become aware of the dreadful state of our roads, pavements, and cycleways due to weeds. This is entirely due to a change in policy the current joint administration forced through at the County Council. The County Council have stopped all cyclic weedkilling (ie annual spraying) as well as spraying before laying new surfaces. Residents across the ward have asked us what we can do about it and we will present a motion to full council on 18 October to try and reverse this decision. If you agree please sign our petition on the County Council website here:

[ePetitions > Reintroduce weedkilling \(cmis.uk.com\)](https://cmis.uk.com)

Sawtry recently saw a remarkable event that showcased the spirit of our community - the Sawtry 10-Mile Run. This event brought residents and running enthusiasts from near and far to participate in the challenge through our village's scenic routes.

The run's success was measured by the impressive turnout and also by the funds it raised for local charities. This event demonstrated that when residents unite, we can achieve the extraordinary.

Please remember, "*The standard you walk past are the standards you set*"

**Cllr Simon Bywater**  
**Sawtry and Stilton Division,**  
**Cambridgeshire County Council**

**07984 637553**

## CANCER WHAT MATTERS TO ME? An HCCN project funded by the Health Inequalities Challenge Prize



Hunts Community  
Cancer Network

Are you someone affected by cancer in the Huntingdonshire area? Maybe you have experienced cancer yourself, or a family member or close friend has a cancer diagnosis? Or perhaps you are a health professional (complementary to the mainstream) who has something to say about your experience of supporting cancer patients?

### Everyone's opinion matters!

Everyone experiences cancer in a different way and HCCN have launched '**What matters to Me?**' to learn more about your priorities, needs, thoughts and feelings around cancer, either in your own life or the lives of the people around you.

The cancer journey is never a path you would choose, but the right services, people, information, support and friendship can make all the difference to both health outcomes and life in general.

If HCCN haven't reached you yet, then please do reach out to them now and let them know more about you, what you need and how you feel. They want to listen and then ACT to shape their charity to be the most relevant, effective, dynamic and supportive it can be for everyone over the age of 18 affected by cancer in Huntingdonshire.

**Email:** [jackie@pureturtle.co.uk](mailto:jackie@pureturtle.co.uk)

**Phone / text / Whatsapp:** 07786 566779

**Post:** Jackie Bland,  
16, The Drive, Peterborough PE36AJ

**To find out more about HCCN charity,**  
**visit our website at:**  
<https://www.hccnthecharity.org/>



## SAWTRY CHORALE

We have spent a couple of weeks getting back into the swing of singing again after a well earned summer break. We started back this year with a slight difference, by introducing an open rehearsal for people to come along to hear the choir in a relaxed setting and for them to sing along, to find out if they liked it. This was extremely well subscribed and as a result, we have now got some new members to swell our ranks.

Yes, we are into preparation for "CHRISTMAS", I tried to whisper that so as not to startle anyone, but we are already rehearsing for the festive concerts. It does feel a little bit unusual to be singing some Christmas classics while it's still sunny and the evenings remain light, however we need to make sure that we've got our repertoire of carols and well-known songs well prepared. It's actually lovely to be thinking about these forthcoming concerts, particularly as we're returning to Sawtry All Saints' Parish Church this year, so we hope you can make for this one.

We have an addition to our schedule for this term, we will be singing with Huntingdon Male Voice Choir, on Saturday 11 November at Huntingdon Commemoration Hall, when we will be singing some of our repertoire and also some joint pieces with them. Huntingdon Male Voice choir will also be singing their repertoire, which may be new to you, so certainly worth coming along.

We look forward to seeing you all again, the dates and venues for our forthcoming concerts are as follows:

- \* Huntingdon Commemoration Hall      Saturday 11 November with Huntingdon Male Voice Choir
- \* Stilton Church                              Friday 1 December at 7.30pm
- \* Sawtry All Saints' Parish Church      Friday 8 December at 7.30pm

All parts of the choir are now well subscribed, however, as always, if you feel inspired to sing, we are always looking for new members, why not join our four-part harmony choir? We don't insist on formal auditions and you don't need to read music. Come along to chat to the musical director or contact us direct, details below, you will receive a warm welcome!

We meet every Wednesday night at the Sawtry Methodist Church  
9 Green End Road from 19:30 – 21:30.

If singing is not your thing, but you are interested in supporting us, get in touch, we would value your support.

**For more information, please call 07870 248897, find us on Facebook, email [sawtrychorale@gmail.com](mailto:sawtrychorale@gmail.com) or visit [www.sawtrychorale.co.uk](http://www.sawtrychorale.co.uk)**



## SAWTRY PARISH COUNCIL

There has been a lot of activity in recent months completing projects around the village. The phase 2 installation of gym equipment at St Judith's field includes accessible pieces added, along with a wheelchair accessible picnic table. A bench has also been installed with the remaining funds from the Sawtry Youth Project. A table tennis table is now in position, donated from the Sawtry Sport4All funding.

In other areas of the village there has been the installation of the zebra crossing on Gidding Road in partnership with the County Council. The play park in Green End Road has also had more equipment installed for younger children. Additional CCTV has been installed on The Village Green.

Major projects in progress are improvements to the building at our Greenfields site and drainage project at St Andrew's Cemetery.

Thank you to the Greystones public house for allowing us to site a new defibrillator on their property. The ongoing work of the Sawtry Litter Pickers is greatly appreciated to help keep our village clean and tidy.

We will be entering Sawtry in Anglia in Bloom 2024 and need your help to form an 'In Bloom' Action Team. This competition is to encourage communities to participate in horticultural and environmental initiatives making a difference to their local surroundings. Groups and individuals are invited to get involved and register their interest with the Parish Council office.

Community Speedwatch – we are looking for volunteers to help operate our equipment. Full training will be given, please contact the Parish Council for details.

In partnership with Creative Arts East and funding from the District Council, the Parish Council hosted Dance Along to the Movies (Mary Poppins) in September. A further two events are planned for the Autumn with live theatre and storytelling – keep a look out for more details on our website, social media and noticeboards.

Coming soon: information regarding the Sawtry Fireworks this year - keep your eyes peeled!

We have welcomed two new Councillors Amy Harber and Freda Grace, but we still have one vacancy. The Parish Council meet on a Wednesday at 7.30pm 11 times a year with additional sub committees meeting quarterly. Please get in contact if you would like to find out more information.

Our website [www.sawtry-pc.gov.uk](http://www.sawtry-pc.gov.uk) has been improved and offers information for parishioners.

**Steve Browning - Clerk to Sawtry Parish Council**

**37 Green End Road, Sawtry, Huntingdon, PE28 5UY**

**Tel: 01487 831771      Office Open: 9.00 - 1.00 Mon - Fri**

# HDC FOOD WASTE & CONTAMINATION

## Fight Food Waste and Win £60

Are you interested in making changes to the amount of food waste you generate in your household? Whether you want to save food, save the environment, or save money, take the pledge to reduce your food waste today!

Reducing food waste is one of the easy habits which will not only reducing your carbon footprint but will also save you money too. We're seeking residents who want to make this positive change to sign our pledge and commit to try to reduce their food waste for four weeks in 2023. We will guide you through your pledge and support you with reducing waste and saving money. We'll send you tips and advice to help you make changes via email and socials from July up until December. Plus you will get a chance to win £60 for every month you are taking in the pledge and you will create some new, greener and more economical habits!

Take the pledge here: <https://www.recap.co.uk/pledge-to-fight-food-waste>.

## Contamination Issue

Huntingdonshire residents are fortunate to be able to recycle a wide of range materials within their kerbside recycling bins. Items such as plastic pots, tubs, trays and bottles, tins and cans, paper and card, and glass can be placed into the recycling bin. Almost 94% of the materials we collect is processed for recycling, and the remainder is materials that have been incorrectly placed out for recycling.

Unfortunately, this material is rejected by our recycling plant and is sent to landfill. The most common item incorrectly placed into the recycling bins is food and food residue, followed by textiles, black sacks and nappies. Residents are asked to rinse out their containers before placing into the recycling bin. This reduces the risk of materials being rejected, other materials being contaminated and helps to keep your bin clean too.

Textiles can be recycled, but they do need to be taken to a charity shop or dropped off at one of the recycling banks dotted around the district. Charity shops and textile banks will also accept old clothing and these will be used for rags. All the materials can be placed into the recycling bin loose. If you did want to bag or have excess waste, this does need to be in a transparent bag so that it can clearly be seen that it is good recyclable material.

Finally, nappies, these should be placed into the grey bin. If your family is struggling for space and you meet our criteria, an additional grey bin can be requested.

**If in doubt check out our A - Z at [www.huntingdonshire.gov.uk/whatgoesinwhichbin](http://www.huntingdonshire.gov.uk/whatgoesinwhichbin) or email [wasteminimisation@huntingdonshire.gov.uk](mailto:wasteminimisation@huntingdonshire.gov.uk)**



## SURPRISE PRIZE BINGO



**Sunday 5<sup>th</sup> November**

**Eyes down at 2pm**

**At the CARESCO Centre**

Behind the Old School Hall  
off Green End Road  
Sawtry, PE28 5UX

**Refreshments  
and raffle**



**All proceeds to CARESCO's  
Christmas Day Party & Chatterbox**

**CARESCO**

The CARESCO Centre, Green End Road, Sawtry, Huntingdon, Cambs, UK PE28 5UX  
office@caresco.org.uk 01487 832105 www.caresco.org.uk

Reg In England & Wales

Charity No: 1140728

Company No: 7513432



## GREENEND DAY CLUB

Invite you to join them for their

## Quiz Supper

**On Friday 20<sup>th</sup> October**

From 7.00pm



Teams of 4 - 6 people



**In the CARESCO Centre**

Off Green End Road, Sawtry PE28 5UX

**Tickets £10.00**

(Per person, to include a hot supper)

**\*\* Bring your own drink & glasses \*\***

**There will be a raffle on the night**

Tickets available from the CARESCO Office

or please call 01487 832105

**All proceeds to CARESCO's GEDC**



**CARESCO**

The CARESCO Centre, Green End Road, Sawtry, Huntingdon, Cambs, UK PE28 5UX  
office@caresco.org.uk 01487 832105 www.caresco.org.uk

Reg In England & Wales

Charity No: 1140728

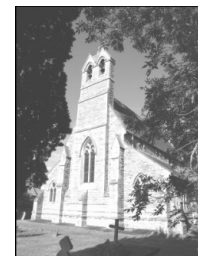
Company No: 7513432







**ALL SAINTS', SAWTRY,  
ST NICHOLAS', GLATTON  
& ST GILES', HOLME WITH CONINGTON  
PARISH CHURCHES**



**BENEFICE DATES FOR YOUR DIARY**

Date	All Saints', Sawtry	St Nicholas, Glatton	St Giles, Holme
Sunday 1 October	--	Benefice Harvest Festival and Lunch	--
Sunday 8 October	10.30am - Holy Communion	4pm Reflective-style Songs of Praise Holy Communion	--
Saturday 14 October	4.00pm - Messy Church	--	--
Sunday 15 October	10.30am - Holy Communion	--	9.00am - Holy Communion **
Sunday 22 October	8.00am - BCP* Holy Communion 10.30am - Morning Prayer & Baptism	9.00am - Holy Communion	--
Sunday 29 October	10.30am - Benefice Holy Communion	--	--
Sunday 5 November	10.30am - Holy Communion	9.00am - BCP Morning Prayer	9.00am - Holy Communion **
Sunday 12 November	10.50 - Act of Remembrance followed by Service of the Word	9.00am - Holy Communion with Act of Remembrance	2.30pm - All Saints' Conington Act of Remembrance 2.45pm - St Giles Holme Act of Remembrance followed by service in St Giles.**
Saturday 18 November	4.00pm - Messy Church	--	--
Sunday 19 November	--	--	10.00am - Holy Communion and Benefice Celebration**
Sunday 26 November	8.00am - BCP* Holy Communion 10.30am Morning Prayer	9.00am - Holy Communion	

BCP\* A much loved traditional service using the 1662 prayer book

In addition, St Giles, Holme will be closed through September and October for completion of the heating project reopening on Saturday 11 November 2023.



**LIGHT AND NEW VENTURES**

As we head towards Autumn and the nights are drawing in, we often begin as a church, to reflect on the contrast between light and darkness. In the Christian faith, where we see light, we see hope and ultimately the light prevails through the darkness and brings new growth and life. We are thrilled to be seeing light and new ventures at our churches and in our community.

We have just launched our new group 'Youth Spaces'. At present the activities planned include board / card games, big screen computer games, tuck shop, space to chat, but we are drawing up an exciting programme from their ideas. The group will meet Sundays in term time, 6 - 7.30pm at All Saints' Church and is for Year 7 and upwards.

We will also see the launch of the Coffee Ark, a new community venture reaching out into our communities aiming to address issues of loneliness and isolation in rural communities. Coffee Ark will be another light shining brightly through this season. We have a fundraising quiz on the Saturday 14 October to support this new initiative.

Looking forward a bit further to the end of November and the beginning of December there will be the Christmas Tree Festival and the much-anticipated return of the pop-up cinemas.

**Reverend Canon Becky Dyball (Wanna be barista Vicar)**



# SAWTRY METHODIST CHURCH

9 Green End Road, Sawtry, PE28 5UX



*All Are Welcome!*

## COFFEE MORNINGS

*Open Saturdays  
in the church hall  
from 9.30am to 11am*

*Drop in for light refreshments,  
a chat with friends  
all proceeds to the church*



*We would love to see you!*

## SUNDAY WORSHIP

*There is a service either in the building, online,  
(using Zoom), or both every week*

### SPECIAL SERVICES

#### *Holy Communion*

**Sunday 1 October** at 10.30am  
Led by Rev James Bamber

#### *Tea Break Café Worship*

**Sundays 15 October & 19 November** at 4.15pm  
Led by Rev James Bamber

#### *Holy Communion*

**Sunday 29 October** at 10.30am  
Led by Rev Alan Taylor

#### *Time to Remember - All Souls*

**Sunday 5 November** at 3.30pm  
United Service at Sawtry Methodist Church

#### *Remembrance Day*

**Sunday 12 November** at 10.45am  
At All Saints' Church, Sawtry

**For details of other services, how to login  
via Zoom, and for other services  
please check our website, or call 01487 830345**

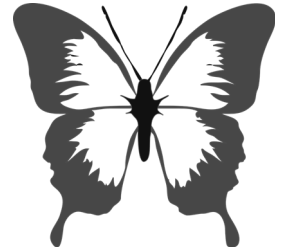
**Come and join us, all are welcome**

## SAWTRY MONDAY FRIENDSHIP GROUP

**Meets fortnightly from 2.00 – 3.15pm in the Church Hall  
Second and fourth Mondays**

*This is an informal fellowship group, sharing experiences, memories and plenty of laughter!  
Quantities of coffee, tea and cake available (of course!!). All are welcome*

**Contact Margaret Wilson 07794 607985**



**For more information, please contact Rev James Bamber on 01480 453857**

**Email [jjamesbamber@gmail.com](mailto:jjamesbamber@gmail.com), or via [www.sawtrymethodist.org.uk](http://www.sawtrymethodist.org.uk)**

**Find us on Facebook - [SawtryMethodistChurch](https://www.facebook.com/SawtryMethodistChurch)**

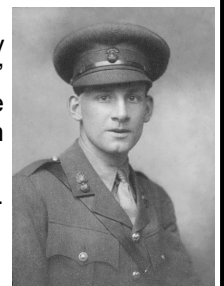
## AUTUMN, A TIME TO REMEMBER

The poet W. H. Auden wrote, 'We must love one another or die.' October and November can be months when remembrances of varying kinds are uppermost in our minds. I find myself thinking that we still have not learned to love, not in the way Jesus puts it in John 15:13, 'Greater love has no one than this, that they lay down their life for their friends.' Loving like this is unlikely to be manifest in grand gestures but in the small seemingly insignificant aspects of everyday living. We are told that the seemingly inconsequential flapping of a butterfly's wings in one place can set off a tremendously significant event in another place. I wonder how families, communities, our village, the world might look differently if we took seriously Jesus' commandment to love one another not only in talk but in action. Talk can come cheap but loving acts of kindness always come with a cost to the giver.

I was interested to read of one war poet's experience. Sassoon became more and more critically of those who pushed religion onto the service personnel leading him to 'love religion less and less.' People of faith are not called to spread religion but the message of a God who loves to the uttermost, who is present amongst the devastation of conflict and suffering and revealed in genuine acts of love which supersede all human boundaries.

In all our remembering may we resolve to learn how to love like God loves so that others may live. May we find everyday ways to live such love.

**Rev James Bamber**



# Youth SPACE

EVERY SUNDAY IN TERM TIME  
(YEAR 7 AND UPWARDS)  
6.00PM - 7.30PM  
ALL SAINTS' CHURCH



## CARESCO CAR SCHEME

*Providing transport for local people*

Run by volunteers using their own cars, journeys (to medical appointments only) can be booked via the Co-ordinator 9am - 5pm, Mondays to Fridays only (subject to availability) on **07810 476979**

Please leave a message, your name & phone number and the team will get back to you as soon as they can

Contact CARESCO on 01487 832105  
Email: [office@caresco.org.uk](mailto:office@caresco.org.uk)




### REMEMBRANCE

The Sawtry and District Branch of the Royal British Legion remember the fallen throughout the year



OCTOBER		
Lance Sergeant John William BINGHAM	29 October 1914	Holme
Private George Thomas HALL	18 October 1916	Conington
Private George Christopher BABBAGE	25 October 1916	Great Gidding
Lance Corporal John Robert ALLAN	31 October 1916	Sawtry
Private Percy WOODS	31 October 1916	Sawtry
Private Jim QUINCEY	2 October 1917	Holme
Private Arthur George COLES	9 October 1917	Hamerton
Private Christopher HARRISON	19 October 1917	Conington
Private Jesse WRIGHT	31 October 1917	Conington
Corporal George SYMONDS	8 October 1918	Holme
Private William HARRIS	21 October 1918	Holme
Private George Arthur GINNS	24 October 1918	Sawtry
Pilot Officer Henry John Hamley JONES	21 October 1943	Great Gidding



NOVEMBER		
Rifleman Herbert SHARPE	14 November 1914	Holme
Private George Henry BOWLAND	14 November 1916	Sawtry
Private Herbert PARKER	3 November 1917	Sawtry
Private James JACKSON	22 November 1917	Sawtry
Private Walter James TURNER	8 November 1918	Old Weston
Lance Corporal Dennis Montague PETERS	9 November 1942	Sawtry
Lance Corporal James Walter QUICK	14 November 1942	Glatton
Private Leslie Benjamin FAVELL	1/2 November 1944	Old Weston



*They shall grow not old as we that are left grow old  
Age shall not weary them, nor the years condemn.  
At the going down of the sun and in the morning  
We will remember them.*

## **CPSL Mind's Good Life Service - A fresh approach to community-based wellbeing support for adults**

Whether you are looking to chat with others in your community, learn new wellbeing techniques, or seek online wellbeing support, our Good Life Services has something for you.

You do not have to be diagnosed with a mental health problem, our Good Life Service is available to adults over 18 in Cambridgeshire and Peterborough. By focusing on individual strengths and skills, we encourage peer support and community connectivity and take an accessible, fresh approach to community-based wellbeing support.



### **Good Mood Cafes**

You can join our weekly Good Mood Cafes in local cafes, or online via Zoom, to connect with like-minded people in your community. It's OK not to be OK - so you don't have to be in a good mood to come along to a Good Mood Cafe – but we hope everyone will leave feeling better than when they arrived.



### **Calm Spaces**

Everyone feels overwhelmed at times. Our Calm Spaces provide somewhere to go if you need space and tranquility. These sessions in local community spaces, offer guidance on self-help techniques that can help you to 'ground yourself' and feel better – both in that moment and in the future.

### **Peer Support Groups**

The opportunity to share lived experiences of mental health with others who have faced similar experiences can have huge benefits.

Our range of Peer Support Groups helps you connect with others who have experiences of low wellbeing, personality disorders, and hearing voices to form supportive bonds with people who understand first-hand what you're feeling.



### **Good Life Fund**

The Good Life Fund offers grants of up to £1,500 to anyone in our local community to help set up groups that connect people, such as book clubs, craft classes, or activities that encourage people to learn new skills.

### **How to sign up**

You can sign up to any of these sessions by emailing us at [goodlife@cpslmind.org.uk](mailto:goodlife@cpslmind.org.uk), calling us on 0300 303 4363 or visiting <https://www.cpslmind.org.uk/> for more information.

# Moroccan Chickpea Stew



Serves 2

Cooking time: around 25 minutes

## Ingredients

- 1 tin chickpeas, drained and rinsed
- 1 tin vegetables, drained eg. diced carrots, peas, green beans, sweetcorn
- 2 tbsp raisins or sultanas
- 1 tin chopped tomatoes
- 1 tbsp oil

## Optional Ingredients

- 1 onion or ½ tin of onions
- 2 tsp pure orange juice
- 1 tsp garlic powder/puree
- 1 tsp paprika

You can add extra flavour using some of these optional ingredients



## Equipment

- Hob
- Large saucepan with lid
- Wooden spoon
- Tin opener
- Teaspoon
- Tablespoon
- Sharp Knife

## Method

- Gently heat oil in saucepan
- Finely chop and add the onion, garlic and paprika
- Pan-fry on a medium heat for 2-3 minutes until soft
- Add the vegetables, tin of tomatoes, raisins/sultanas and chickpeas
- Add the orange juice (or 2 tbsp water instead)
- Bring to the boil on a high heat
- Reduce heat, cover with a lid and gently simmer for 15-20 minutes
- Serve with bread or rice

# Oaty Fruity Crumble



Serves 4

Cooking time: around 50-60 minutes

## Ingredients

- 2 tins fruit eg. Berries, stewed apples, mandarins, peaches, pineapple, fruit cocktail
- 40g porridge oats (1/3 mug)
- 80g flour (1/2 mug)
- 50g cold butter or margarine
- (roughly 3 1/2 tbsp)
- 4 tbsp sugar
- 1 tsp oil

## Optional Ingredients

- 1 tsp cinnamon

Fresh or frozen fruit can also be used



## Equipment

- Oven
- Oven proof dish
- Mixing bowl
- Tin opener
- Teaspoon
- Tablespoon
- Scales/mug

## Method

- Preheat oven to 180°C. Lightly oil ovenproof dish
- Place flour in a bowl. Rub butter/margarine into the flour until mixture looks like breadcrumb crumbs
- Mix in the oats, sugar and cinnamon
- Drain the fruit (keep any fruit juice for use at a later time)
- Place fruit into the bottom of the ovenproof dish and top with the crumble mixture
- Bake for 30-40 minutes or until the top is lightly brown
- Nice served with custard.

*Coeliac/gluten free adaption: Use gluten free porridge oats, flour and custard powder.*



Wildlife Trust for  
Beds, Cambs  
& Northants

## Huntingdonshire Local Group

### Butterflies and Moths

Wednesday 11 October at 7.30pm at Brampton Memorial Hall

Our illustrated talk will be given by Martin Davies, an all-round naturalist, but his main focus is now on butterflies. This talk will be a follow up to his guided walk which was held at Therfield Heath in August.

### Lee Valley Regional Park

Wednesday 8 November at 7.30pm at Brampton Memorial Hall

Eamonn Lawlor will give an illustrated talk on the wildlife and management of Lee Valley. Eamonn joined the Wildlife Trust as Senior Reserves Office for West Cambridgeshire in 2022, having previously spent several years as a ranger at London's 'green lung' – Lee Valley Regional Park. The park was formally constituted in 1967 after many years of planning and Eamonn will enlighten us on the development and success of this area for wildlife.

**Everyone is most welcome to attend, booking is not necessary. The charge is £3.50 and payment is by cash or card. We meet at Brampton Memorial Hall, Thrapston Road, Brampton, PE28 4TB.**

**For more information please contact George (01480 450809 or [georgecottam@virginmedia.com](mailto:georgecottam@virginmedia.com))**

Part of the Wildlife Trust for Bedfordshire, Cambridgeshire and Northamptonshire  
Registered Charity No: 1000412

## SAWTRY TABLE TENNIS CLUB

### Club News

The club held its AGM in September. There have been a few changes within the committee this year. Firstly, two committee members stood down during the year and at the AGM Ian Francis was voted on as our Acting Chairperson.

We would like to thank the two committee members for their help and input while they were on the committee. So here is the makeup of the Committee for 2023:

- Chairperson Peter Blundell
- Acting Chairperson Ian Francis
- Vice Chairperson Susan Bate
- Secretary Pauline Williams
- Treasurer Mark Brant
- Welfare Secretary Simon Bate
- Booking Secretary Pauline Williams



On in September, we also held a Free Taster Session. We welcomed a selection of people into the club, some of whom have played before (some time ago!) and a couple who have not. We hope to see them again and anyone else who is interested in playing at the club.

We will be back open by the time you read this, it is unknown if it will be for both Monday and Tuesday evenings. So, keep an eye on our Facebook page or check out our website (see bottom for details).

### League News

By the time you read this, the Peterborough Table Tennis League will have started, and our two teams may have played a few matches and I am hoping you will get to hear from the Team Captains in the next issue. The A Team Captain is Ian Francis, and the B Team Captain is Matthew Bate.

### Other Club News

The club has reached another milestone with our easyfundraising page. We have hit over £40 in donations. Thanks to all of the club's supporters for this, and we hope you continue donating.

### The club meets at the club's venue:

Sawtry Junior Academy, Middlefield Road, Sawtry, Huntingdon, Cambridgeshire. PE28 5SH.

### Times of Session:

Please contact the club.

**To keep up to date with what the Club is doing check out our website or Facebook:**

**[www.sawtrytabletennisclub.org.uk](http://www.sawtrytabletennisclub.org.uk)**

**[@SawtryTableTennisClub](https://www.facebook.com/SawtryTableTennisClub)**

**If you are interested in joining us, please feel free to contact the Club via email: [welcome@sawtrytabletennisclub.org.uk](mailto:welcome@sawtrytabletennisclub.org.uk)**



# KI KONG TANG SOO DO

## Resent Promotions

### Kickboxing

White Belt Tag Ryley Nightingale, Addison Courquin,  
 Orange Belt Ruth Williams, Heidi Xu, Qing Xu, Jet Xu,  
 Green Belt Tag Russell Courquin, Devon Courquin,

### Tang Soo Do Karate

White Belt Tag Ryley Nightingale, Addison Courquin,  
 Orange Belt Ruth Williams, Heidi Xu, Qing Xu, Jet Xu,  
 Green Belt Tag Russell Courquin, Devon Courquin,  
 Black Belt Steve Pettener,

### Events

DSI Seminar every second Sunday in the Month  
 4 November HRTSD Championships  
 12 November Black Belt Hall of Fame Awards  
 25 November Local Seminar Sawtry

**Instructor - Grand Master Mark Adlington**

**Location - Private Gym Sawtry**

**Contact - 07585 950923 - [markadddd@gmail.com](mailto:markadddd@gmail.com)**

**Facebook - Ki Kong Tang Soo Do**



### Classes

Classes and advanced classes can be booked any day and time we don't have another class running

Weekday	Time	Class
Mondays	4.30pm	Family Class
Tuesday	5.30pm	Healing Class
Tuesday	6.30pm	Adult Class
Wednesday	Open for Booking	
Thursday	4.30pm	Family Class
Thursday	5.30pm	Family Class
Sunday	10.00am	Family Class
Sunday	10.00am	Family Class
Sunday	11.00am	Adult Class



## SAWTRY COLTS

Football has returned to Greenfield, and also to Sawtry Junior Academy and Sawtry Village Academy, where some of the teams now play their home matches as we now have more Sawtry Colts sides than capacity at Greenfield. This season we begin with 17 teams ranging from two sides at Under 7 up to our eldest, the Under 16s, with one Under 12 (U12) all-girls side now beginning their second season of competitive football.

It is probably a distant memory by the time you read this, but the season started on the hottest day of the year with matches taking place in temperatures in excess of 30 degrees. Drink breaks were the order of the day as teams managed the heat with all the players performing exceptionally well under the trying conditions.

The U16 team gained their first win at the first time of asking with a 3 - 1 victory away at Needingworth in sweltering conditions. They were 2 - 0 up, were then pegged back to 2 - 1 before swiftly restoring their two goal lead and, despite a late flourish from the opposition, held out for the two goal victory.

The U15s also secured victory in their opening match winning comfortably 7 - 1 away to March Academy with four different players getting on the scoresheet.

The run of away wins continued with the U14s also claiming victory away to March. They triumphed 6 - 0 in very hot conditions with the kick off taking place at 11.50am. The win was even more pleasing due to their limited pre-season.

Another Sawtry team who started with an away match were the U13s, but unfortunately they also started with a loss going down 6 - 1 to Chatteris.

The U12 Yellows travelled to Somersham for their first match and came away with a well-earned 4 - 2 win. The U12 Blues were not so successful going down 7 - 3 away to Godmanchester.

One team who did play at home were the U12 girls' team who had a hard fought victory defeating Haverhill 2 - 1.

Hopefully, despite FA rules preventing publication of the younger team's results, we can bring you some news of their exploits on the pitch as their season's progress.

**As usual, a reminder of the Sawtry Colts website, available at [sawtrycoltsfc.co.uk](http://sawtrycoltsfc.co.uk), where details of all the teams can be found as well as managers' contact details should any aspiring players wish to find a team. A few teams are looking for new players, particularly the U12 Blues. If anyone in Year 7 is interested, they currently train on Thursdays and can be contacted via the website.**

**Brian Craig - [sawtrycoltsfc.co.uk](http://sawtrycoltsfc.co.uk)**



## SAWTRY GOLF SOCIETY

The first game of our new season saw us visit the Oundle Golf Course, winning the day was our Captain for this year Ian Simpson, playing off a handicap of 7, he won with a score of 34 points, one ahead of Vice Captain Tony Littlefair who was a further point ahead of Nick Bussey.

Next up was Elton Furze for the first of our "majors" of the season, this is a Stroke Play competition with every shot counting, continuing his fine start to the season was Tony Littlefair who won with a score of Net 72, 2 ahead of Joe Langley and John "Guzzler" Lindsey

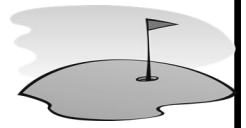
August saw us visit Ramsey for round 3 in this year's calendar where Tony "The Bandit" Morley lived up to his nickname with a storming win with 39 points, 3 points ahead of Jason Bohonis and 4 ahead of The Guzzler.

Early September we played a new competition for our society a "friendly" 3 ball Texas Scramble where we visited The Woolfox Golf Complex in scorching heat, winning the day with 47 points were AJ Longford, Ian Simpson & Lindsay McLachlan, they were just 1 point ahead of Neil Farrington, Neil Bohonis and John Hedington.

After 3 rounds Tony Morley leads the way at the top of our league, 3 points ahead of Tony Littlefair and 8 ahead of Jason Bohonis, but there is a long way to go.

Our next games are at Kilworth in September, The Leicestershire in October and the Cambridge Country Club in November, results will be published once again in the next issue.

**Sawtry Golf Society accommodates local golfers from scratch to 54 handicaps, we welcome all comers who enjoy a round of golf, if you are interested, please contact us on our Facebook page or ring our secretary AJ Longford (07947 346218) membership to the end of 2023 is only £10.**



**SAVE THE  
DATE**

### Silent Disco

Saturday 16 December at Sawtry Social Club

### Mix Tape - 80s to 00s

Saturday 3 February 2024 at Sawtry Village Academy

*More details to follow*

**CARESCO**  
meeting needs in our local community



## SAWTRY WALK TO RUN

SAWTRY  
WALK TO RUN

On Sunday 3 September we hosted our second Sawtry 10 Mile Race. Entries were up on 2022 and on a beautiful warm day our team of nearly 100 volunteers welcomed local runners to Sawtry. Both course records were beaten, David Hudson with 53.12 and Lucy Mapp with 1.01.



Thank you to the Sawtry community for coming out to support the event we really appreciate it and participants were very complimentary of the support shown on the day.

CARESCO's pop-up cake shop made £300.00 and we're matching this figure with the total going to Sawtry Foodbank. Thank you CARESCO for feeding and watering the nearly 100 volunteers at the crack of dawn too!

As well as community support on the day, local businesses also help us to keep the event alive. John Green Premier as our ongoing lead sponsor started the race and oversaw medal presentations fondly recalling his time running the course in his youth. Our other kind sponsors were Spirotech, Sawtry Cars, Body Mechanics, The Greystones, Coopers, Jasmart Timber Products and AMB Accountancy and Bookkeeping. Also special thanks to Doug Bailey - for being our knight in shining armour with short notice PA loan

SVA were on hand to kindly let us use the school for the event and we had cooling on the course provided by the Community Fire Station, recycling of water bottles by Hunts DC, parking area from Sawtry Parish Council, Academy Leisure provide year around support and the use of their facilities, help with organising, clearing of the vegetation on route by Councillor Simon Bywater, and finally Ray for his huge help with traffic.

Hold this date for our Santa Run on Sunday 3 December 10.00am for our regular 5K Sawtry Santa Run.

We have a sister club for cyclists of all abilities - Sawtry Bike to Cake who can be found on Facebook or we can happily forward your details on.

If you want to come and join us with others of all abilities we meet at 7.15pm Tuesday and Thursday outside Academy Leisure and on Sundays at 8.30am at St Judith's Field. If you have not tried running in a group, it's very rewarding and makes the time fly by!

**David Bartle, Club Chair**

Call David on 07703174937 or contact Fiona Hurst our membership secretary at [fionahurst@hotmail.co.uk](mailto:fionahurst@hotmail.co.uk) for details.



**More info at [www.sawtrywalktorun.co.uk](http://www.sawtrywalktorun.co.uk) or our Facebook page: Sawtry Walk to Run**

*Running - it's much more fun than you might think!*





# CAMBRIDGESHIRE FIRE AND RESCUE SERVICE

## Take Charge and Be Safe!

Cambridgeshire Fire and Rescue Service is urging residents to **Take Charge and Be Safe** by keeping in mind some simple steps when using electrical devices, especially those with Lithium-Ion batteries. By following a few simple safety measures, like adding fire safety to your bedtime routine and being awake when using and charging some devices or appliances, people can keep safe in their homes.



**CAMBRIDGESHIRE  
FIRE & RESCUE SERVICE**  
Working together to improve community safety

Lithium-Ion batteries can be found in many electronic devices that are used every day. Things like mobile phones, laptops and tablets, vape cigarettes and games console controllers, as well as e-scooters and e-bikes.

### E-scooters and e-bikes

E-bikes and e-scooters are becoming a popular mode of transport and when bought from a reputable seller, with the correct battery and charger, and maintained well, they can be used safely.

Simple tips can help reduce the risk of overheating a battery:

- Use the correct charger for your battery, and make sure to buy from a reputable seller
- Make sure your battery and charger meet UK safety standards – look for the CE mark
- Ideally, don't charge your e-bike or e-scooter overnight or while you are sleeping. If you must charge overnight, charge the bike/scooter in a room away from escape routes, close the door to the room and ensure the room has a smoke detector in it
- Keep an eye out for warning signs that your battery might be failing and becoming a fire risk – if the battery is getting very hot, making a noise, smoking, leaking or bulging or the charger cable is frayed, stop using it and get a replacement. It is normal for batteries to feel warm when charging but if it is extremely hot to touch it is a sign it may be defective and could start a fire
- Let your battery cool after use before charging it
- Unplug your charger once the battery has charged.

### Bedtime routine

Many fires in the home start at night while people are asleep. This can be down to a number of different causes, but can be easily avoided by following a few simple tips, as well as having working smoke alarms on each floor of your home.

A bedtime routine is a great way to help you and your family stay fire safe in your home. By following a few simple tips before heading to bed for the night, you can prevent a fire from happening or, if one does break out, stop it from spreading.

**Tip 1** - Switch off plugs and electrical appliances before heading to bed, as well as blowing out candles. Things like fridges, freezers and smart devices (eg Alexa) are designed to be kept on, but TVs, microwaves, washing machines and tumble dryers should all be turned off, as should wax melters.

**Tip 2** - Closing internal doors will help prevent a fire from spreading, if one does break out. Take the time to close any doors around your home, especially the kitchen door.

**Tip 3** - Work out the quickest way to escape your home should a fire break out and make sure it's clear before heading to bed. Keep stairs, hallways and corridors clear of clutter to ensure you and your family can get out quickly if needed.

**Tip 4** - Before going to bed, make sure you have quick access to your keys so you can easily leave the house if needed.

### Batteries

When buying lithium-ion batteries, there are a couple of things you can look for to decrease the chances of buying a dodgy battery.

The battery should have a CE mark to signify it meets UK standard.

There are a few steps you can follow to increase your safety in your home when charging lithium-ion batteries. Where possible, buy from recognised manufacturers for example.

Lithium-ion batteries can't be disposed of in your regular household recycling. Doing so can cause fires. Many local shops have a battery bank where you can dispose of them and recycling centres can also take them.

If you're unsure you can check with your local council.

Residents can also use our online home safety check to carry out their own fire risk assessment of their home. This simple to use tool goes through each area of a property and generates a safety plan for the occupants to follow. The check can be carried out on behalf of a vulnerable family member. Find out more on the fire service's website: [www.cambsfire.gov.uk](http://www.cambsfire.gov.uk).

Please do not reply directly to this email. If you wish to get in contact, please email [pressoffice@cambsfire.gov.uk](mailto:pressoffice@cambsfire.gov.uk).

**[CambsFire@public.govdelivery.com](mailto:CambsFire@public.govdelivery.com)**



North Cambridgeshire &  
Peterborough Care Partnership

# SPOTLIGHT ON SAWTRY

**FREE ENTRY**

**POP IN & JOIN US FOR A CHAT, CUPPA  
AND CAKE.**

**TELL US ABOUT YOUR VILLAGE AND FIND  
OUT WHAT'S GOING ON.**

**Friday 20th October 10am-4pm**

>>>>

<<<<



- ✓ Find out about different health, care, and social support groups in your area
- ✓ Access digital support
- ✓ Have your say
- ✓ Lets commit, to making Sawtry even better, together!

**THE OLD SCHOOL HALL, SAWTRY PARISH COUNCIL  
37 GREEN END ROAD, PE28 5UY**

**PLEASE CONTACT AIMEE PHILLIPS -  
EMAIL ADDRESS BELOW TO  
BOOK A STALL AND  
PROMOTE YOUR COMMUNITY ACTIVITY/GROUP**

**For More Information**

**[aimee.phillips@nhs.net](mailto:aimee.phillips@nhs.net)**