



# SAWTRY EYE

Distributed to Conington, the Giddings, Glatton, Holme, Upton, Winwick, & Sawtry

[www.caresco.org.uk](http://www.caresco.org.uk)

Price £1.00 (where bought)

No. 169 - April - May 24

**CARESCO**  
meeting needs in our local community



**Saturday 11<sup>th</sup> May**  
7.00 – 11.00pm  
At Sawtry Village Academy  
Fen Lane, Sawtry, PE28 5TQ

with DJ Dave Wisker

**RAFFLE ON THE NIGHT**

**Ticket only event**  
£10 per person (18+)  
bring your own drinks, glasses and nibbles

Tickets on sale from the CARESCO Charity Shop or call 07743 216746

All proceeds to CARESCO

The CARESCO Centre, Green End Road, Sawtry, Huntingdon, Cambs, UK PE28 5UX  
office@caresco.org.uk 01487 832105 www.caresco.org.uk  
Reg in England & Wales Charity No: 1140728 Company No: 7513432

Registered with **FR** FUNDRAISING REGULATORY

Join us for another fun day at...

Would you like to get involved?  
Contact us at:  
sawtrycommittee@gmail.com

Live Band  
Stalls  
Rides  
Activities!

Sawtry  
**CARNIVAL**  
**2024**


Find us on facebook!  
Sawtrycarnival

8th June  
**The Wild West**



**Conington Evensong**

Join us at Conington Church (All Saints')  
on Sunday 12 May  
at 3pm  
for a Book of Common Prayer (BCP) Evensong.  
Everyone Welcome



**Craft Retreat Day**

Learn the art of Indian Block Printing in a beautiful rural location

Create amazing designs on a selection of items to take away with you

Coffee on arrival, enjoy a lunch of Home-Made Soup and Rolls

Thursday 9<sup>th</sup> May, 10am until 3.30pm £45 pp Spring theme  
Saturday 8<sup>th</sup> June 10am until 3.30pm Summer theme  
Thursday 7<sup>th</sup> November 10am until 3.30pm Autumn/Winter theme

All materials included

Ferrar House, Little Gidding PE28 5TJ

Email [info@ferrarhouse.co.uk](mailto:info@ferrarhouse.co.uk) Tel 01832 293383



If you are moving house, please leave a recent copy of Sawtry Eye for the new occupiers - Thank you



2024	Group	Details	Contact	Page
28 April	CARESCO	Prize Bingo	01487 832105	7
28 April	CARESCO	Big Breakfast	01487 832105	8
3 May	CARESCO	Story Time	01487 832105	6
11 May	CARESCO	Mix Tape	01487 832105	Front Page
27 May	Sawtry & District Bowling Club	Bowls England 'Big Weekend'	07989 503740	20
31 May	CARESCO	Story Time	01487 832105	6
4 June	Sawtry Feast Supper	Feast Supper 2024	07368 210882	--
8 June	Sawtry Carnival Committee	Sawtry Carnival	sawtrycommittee@gmail.com	Front Page
29 - 30 June	Sawtry Colts Football Club	Summer Tournament	--	--
5 - 11 August	Sawtry Light Factory	Children's Holiday Club	01487 830345	6
8 September	Sawtry Walk to Run	Sawtry 10 Mile Road Race	07703 174937	19
14 September	Sawtry Show Committee	Sawtry Show	thesawtryshow@outlook.com	9

## ***ADVERTISE YOUR COMMUNITY EVENT HERE***

If you would like to have a date considered for inclusion, please email the details along with a contact number to [sawtryeye@caresco.org.uk](mailto:sawtryeye@caresco.org.uk) with the subject 'Make a Date' or phone us on 01487 832105 (answer phone outside office hours).

We reserve the right to decide which items to include. CARESCO is not responsible for the accuracy of the above information.

Please check with the individual group concerned.



### CHARITY SHOP

Fundraising by recycling

7 Greenways, Sawtry, PE28 5UR

## DONATION BOOKINGS

*There are 3 ways to book your donations in with us!*

- Pop in to the shop and make a booking
- Email us on [shop@caresco.org.uk](mailto:shop@caresco.org.uk)
- Telephone the shop on **01487 208026**

We're sorry but we are unable to accept any donations that do not have a booking.

Thank you  
for your understanding



## GREEN END DAY CLUB

### QUIZ SUPPER

Future Dates



17 May

30 August

22 November



Look out for further details on our Facebook page, Website and in the Sawtry Eye.



The CARESCO Centre, Green End Road,  
Sawtry, Huntingdon, PE28 5UX

01487 832105

office@caresco.org.uk

www.caresco.org.uk



**Contact details:**

Sawtry Eye  
The CARESCO Centre  
Green End Road  
Sawtry, Huntingdon  
Cambs PE28 5UX

01487 832105

Please where possible, email articles & letters with the subject "For Sawtry Eye" and enclose full name and postal address to:

[sawtryeye@caresco.org.uk](mailto:sawtryeye@caresco.org.uk)

Past issues can be found at  
[www.caresco.org.uk](http://www.caresco.org.uk)

**Co-Editors**

Marina Joyce / Donna Green

**Advertising/Sales**

Marina Joyce / Donna Green

**Design / Artwork**

Donna Green

Printed By:

**Clanpress (King's Lynn) Ltd**

**EDITORIAL POLICY SUMMARY**

- All items are included at the discretion of the editors who reserve the right to edit or refuse to print any item submitted.
- Views expressed in the Sawtry Eye are not necessarily those of the editors or CARESCO.
- Readers may be offered a right to reply where this is considered appropriate.
- The editors cannot accept any liability for omissions, errors or mistakes which occur in production.

The full Editorial Policy is available from the CARESCO office or [www.caresco.org.uk](http://www.caresco.org.uk)

For Issue No 170  
June - July 24

Advertisements by  
12 Noon on 10 May

News Items by  
12 Noon on 17 May

**Rates for Mono**

**Eighth Page: Landscape (6.5cm x 8.5cm)**  
1 Issue - £28.30  
6 Issues - £141.50  
Monthly SO - £12.40

**Quarter Page: Portrait (13cm x 8.5cm)**  
1 Issue - £47.70  
6 Issues - £238.50  
Monthly SO - £20.80

**Half Page: Landscape (13cm x 17.5cm)**  
1 Issue - £84.60  
6 Issues - £423.00  
Monthly SO - £37.00

**Full Page: Portrait (17.5cm x 26cm)**  
1 Issue - £157.60  
6 Issues - £788.00  
Monthly SO - £68.90

\* All prices include VAT

For more information and prices for colour, contact the CARESCO office

# Welcome...

The daffodils are out, the weather is warming up and it's still light by teatime! It all helps to lift our spirits.

We have details of lots of events in the local area inside this issue.

Have you thought about your costume for The Wild West theme Carnival in June (front page), or have you started planning your entries for the Show in September (page 9), it's never too early to begin!



Have a good one

## Sawtry Eye Team

### CARESCO

meeting needs in our local community

### SAWTRY FOODBANK

We are extremely grateful for all the donations of food we are receiving during these difficult times.



The following is a list of items we particularly need currently to make up our food parcels:

- Tinned Fruit
- Tinned Veg
- Squash
- Long-Life Milk
- Long-Life Fruit Juice

Extra...we can also use donations of toiletries such as shower gel, shampoo, toothpaste and pet food.

Donations need to be well in date please. We can't accept fresh, frozen, chilled or home-made items or any alcohol.

**Donation points include:** CARESCO Centre - CARESCO Charity Shop - All Saints' Church, Sawtry - Methodist Church, Sawtry - St Nicholas' Church, Glatton - St Giles Church, Holme - Sawtry WI (members only) - Sawtry Village Academy - Sawtry Infant School - Alconbury CofE Primary School - Sawtry Social Club - Cromwell Vets, Sawtry - Alconbury GP Surgery - Great Gidding Store - Sawtry Co-op Food Store.

For more information please call 07743 593863

Email [foodbank@caresco.org.uk](mailto:foodbank@caresco.org.uk) or visit [www.caresco.org.uk](http://www.caresco.org.uk)



# Inside

2	Make a Date / CARESCO	15	Wildlife Trust
3	Welcome	16	Sawtry Methodist Church
	Notices / Letters	17	All Saints', Sawtry, St Nicholas', Glatton & St Giles', Holme With Conington Parish Churches
8	Holme Community Speedwatch	17	Fen Edge Churches News
8	Holme Youth Club	18	REMEMBRANCE
9	Sawtry Show 2024	18	Sawtry Golf Society
10	Sawtry WI	19	Sawtry Colts
10	CARESCO Grants News	19	Sawtry Walk To Run
11	Sawtry History Society	20	Sawtry Table Tennis Club
11	An Eye On Nature	20	Sawtry & District Bowling Club
12	Sawtry Chorale	21	Ki Kong Tang Soo Do
12	Cllr Simon Bywater	21	Crossword - Just For Fun
13	Royal British Legion, Sawtry	22	Useful Contacts
13	Wildlife Trust	23-32	Advertising
13	Sawtry Infant School		
14	Sawtry Camera Club		
14	News From Sawtry Library		
15	Sawtry Parish Council		





## SCHOOL TERM DATES

### Summer Term 2024

Start of term 15 April  
Half Term - 27 to 31 May  
End of term 22 July

### Autumn Term 2024

Start of term 3 September  
Half Term - 28 Oct to 1 Nov  
End of term 20 December

### Spring Term 2025

Start of term 6 January  
Half Term - 17 to 21 Feb  
End of term 4 April



**NB** Academies are responsible for setting their own holiday dates and may not match those set by Cambridgeshire County Council. Schools have a number of training days available to take in addition at their discretion. Please contact your local school for more details.

Information taken from [www.cambridgeshire.gov.uk/education](http://www.cambridgeshire.gov.uk/education)



## HDC REFUSE COLLECTION

### LANDFILL WASTE (GREY)

(Week Beginning)  
1, 15 & 29 April  
13 & 27 May

### GARDEN WASTE (GREEN) & RECYCLING (BLUE/GREEN)

(Week Beginning)  
8 & 22 April  
6 & 20 May

To find out your exact dates or for more information visit <http://www.huntsdc.gov.uk>



Your Kind of Music presents

## 'Stilton in Tune'

Our monthly concerts continue and we sincerely hope that you can join us at some time.

**Sunday 7 April** Daniel Watt

**Sunday 5 May** Glyn Madden

All shows commence at 2.30pm (doors open 1.45pm) at Stilton Pavilion, High Street, Stilton, PE3 7RA  
Finishes around 5pm with 30 minute refreshment break and raffle

Entrance £10 on the door with refreshments included  
Raffle, with excess proceeds to Magpas Air Ambulance

Give us a try, you will be amazed at the sounds from these instruments.

### Support live music!

More details will be provided on Facebook pages for the area.

**For further details please contact  
Tony Oliver on 01480 474282 or 07918 602600  
or email [tony.oliver5@btinternet.com](mailto:tony.oliver5@btinternet.com)**



## SOUNDS GOOD

Come and join us for all things musical and the spoken word

We meet on the 2<sup>nd</sup> and 4<sup>th</sup> Fridays of the month, from 1.30 to 3pm  
At the CARESCO Centre

**12 & 26 April  
10 & 24 May**

**CARESCO**  
meeting needs in our local community

**Please contact the CARESCO office on 01487 832105 for information**

**There is a charge of £2.00 per session, refreshments included**



## CARESCO CAVE

We are a 'Warm Space', open Monday and Thursday 9.00am to 1.00pm and Tuesday 9.00am to 4.00pm. Please come along for a coffee and chat. See the projects and repairs we are working on at present.

Do you have a project you want some help with?

Everybody is welcome, male or female. We are a happy crew and welcome new members.

We replace watch batteries and carry out PAT testing at a fee of £3 each.

**Contact us by calling 07851 803482 and leaving a message, emailing us at [thecave@caresco.org.uk](mailto:thecave@caresco.org.uk) or pop in during one of our sessions to speak to us, you can find us at the rear of Sawtry Community Centre off Green End Road, Sawtry, PE28 5UX**

**CARESCO**  
meeting needs in our local community



**Saturday 20 April, 4.00 - 6.00pm**

at All Saints' Church,  
Church Causeway, Sawtry, PE28 5RD

**Activities, crafts, Bible story and song, followed by supper.**

**Messy Church is for all ages and families of all shapes and sizes!**

**If under 16, you will need to bring an adult with you**

To find out more, contact Ali Scott [childrensministry@allsaintssawtry.org.uk](mailto:childrensministry@allsaintssawtry.org.uk) or go to our website: [www.allsaintssawtry.org.uk](http://www.allsaintssawtry.org.uk)

**Otherwise just turn up!**

**No charge, but donations welcomed**

**We look forward to seeing you!**

## THANK YOU

Many thanks to all of the volunteers for the beautiful flower arrangements that welcome us on our journeys in and out of the village, also to the litter pickers who do such a great job alongside our parish council gentlemen who clean up and keep our bins empty it makes such a difference to the appearance of our countryside.

Thank you to you all

**Isolde & David  
Whitmore**



## VOLUNTEERS FOR SUMMER READING CHALLENGE

Sawtry Library needs your help.

If you are aged between 12-18 and know that you will have lots of spare time over the summer holidays, then why not sign up to be a reading challenge volunteer.

As a volunteer you would be asking children about the books they have been reading, recording their progress and giving them stickers.

If you are interested just pop into Sawtry Library from the beginning of May to pick up an application form.

Full contact details on  
page 14



## CHATTERBOX

**Drop-in sessions  
for family carers**

A friendly drop-in  
where you can get help.



Chat & relax  
over a cuppa.  
Guest speakers  
& Carers  
Assessments

**Every 2nd & 4th Monday  
between 2.15 - 4.15pm**

**Come and join us**

No meeting on Bank Holidays

**8 & 22 April  
13 & 27 May**

At the CARESCO Centre,  
Green End Road,  
Sawtry, PE28 5UX

**For more information email:**

**office@caresco.org.uk**

**or call the**

**CARESCO Office  
01487 832105**



## SAWTRY WI HALL

Available for Hire

Gidding Road, Sawtry PE28 5TS

Regular or occasional events welcome

Recently refurbished, accessible, clean and bright kitchen, new fridge, microwave, outdoor space, excellent lighting,

Wi-Fi - Capacity 70

**sawtrywihall@gmail.com**  
**Instagram: Sawtry\_WI\_Hall**  
**Sawtry WI Hall | Facebook**

**Sawtry  
CARNIVAL**

**SATURDAY 8 JUNE  
12 NOON - 5PM**



## SAWTRY INDOOR BOWLING CLUB

Tuesdays 2 - 4pm

in Sawtry Methodist Church Hall,  
9 Green End Road, Sawtry, PE28 5UX

Have you tried indoor bowling?  
Come and have a go.

We are open to new members,  
no experience necessary!

**For more information contact  
Dorothy on 07565 543189**



## COFFEE ARK



Coffee Ark is serving up delicious refreshments regularly in our local villages.

Check out [www.coffeeark.org](http://www.coffeeark.org) and relevant social media for our latest hatch opening times.

Regular spots include; Sawtry Village Academy, Glatton Village Hall and new locations added all the time.

See you there. ☕🐾

## BOOK STALL AND COFFEE MORNING

At Winwick Church

Monthly, second Saturdays:

13 April & 11 May

10.00 till 11.30am

The Church is open for everyone to come along and enjoy a cup of coffee and cake and browse our extensive supply of second-hand books

Donations invited in exchange for the above

Proceeds to go to the Church

For more information  
please contact :

**Sue Fowler 01832 293215**



## THE BIBLE COURSE

Starting Monday 15 April for 8 weeks.

8pm at Greystones, Sawtry

(Join us from 7pm if you'd like food)

Big, complex, old ... just some of the words people use to describe the Bible. Sound familiar? That's where The Bible Course comes in.

The course provides a birds-eye view of the world's bestselling book, increases your confidence, equips you to read the Bible better and helps you to see its relevance to daily life.

**Contact:**  
**[revdyball@gmail.com](mailto:revdyball@gmail.com)**  
**for more information.**



## JULIE'S SAWTRY/YAXLEY STEPPERS LINE DANCE CLASSES

**Mondays:** 10am - 12.15pm  
Beginners/Improvers/Low Intermediates  
Old School Hall, Sawtry

**Wednesdays:** 7pm - 9pm  
Intermediates/Advanced (book first)  
Old School Hall, Sawtry

**NEW THURSDAY CLASSES:**  
7pm - 9pm  
Absolute Beginners/Improvers/Intermediates  
Yaxley British Legion Social Club,  
210 Broadway, Yaxley, PE7 3NR.

**Friday:** 6pm - 7.30pm - Improvers  
7.30pm - 9pm - Intermediates  
Old School Hall, Sawtry

*Sunday Social First Sunday of the month, 2pm - 5pm.  
at the Sawtry Club, 10 Gidding Road, Sawtry*



Line Dancing

For more information contact  
Julie Gillmore at  
[jcgillmore@sky.com](mailto:jcgillmore@sky.com)  
or 07939 070 406  
or ask to join  
Sawtry Steppers Facebook group



Every Thursday (term time)  
9:00 - 10:30am (doors open 8:30am)  
Methodist Church Hall,  
Green End Road, Sawtry, PE28 5UX

A safe play space to enjoy adventures with  
0 - 5 year old's and all those who care for them.  
Bible Themed Crafts, Story-time, Refreshments,  
Singing, Prayer and lots of fun!

If you care for a little one as a parent,  
grandparent, carer or childminder, come along  
and join the fun.

For more information please contact  
Alex Dyball  
[littlestaintssawtry@gmail.com](mailto:littlestaintssawtry@gmail.com)  
or call 01487 506217

## STORY TIME AT THE CARESCO CENTRE



Bring your little ones to hear a story!

Settle down at 12.15pm  
to hear a short story read by one of our volunteers

12.15pm to 1.00pm

Friday 3rd May  
Friday 31st May  
Friday 5th July  
Friday 2nd August  
Friday 30th August  
Friday 4th October  
Friday 1st November  
Friday 29th November  
Friday 20th December

This activity is FREE of charge  
but any donation will be  
greatly appreciated.

All children will need to  
be accompanied by an  
adult at all times.

CARESCO Centre, Green End Road, Sawtry. PE28 5UX

**CARESCO**  
meeting needs in our local community

01487 832105

[office@caresco.org.uk](mailto:office@caresco.org.uk)

[www.caresco.org.uk](http://www.caresco.org.uk)

## SAWTRY LIGHT FACTORY CHILDREN'S HOLIDAY CLUB

Monday 5 to Sunday 11 August  
at the Methodist Church, Green End Road  
For school years 1 and above

**FREE ADMISSION**

Advance registration recommended.  
available in July, look out for details

For more details, call Matt  
on 01487 830345  
or visit [www.sawtrylightfactory.uk](http://www.sawtrylightfactory.uk)  
Find us on Facebook:  
Sawtry Light Factory



## Fairy Trail At Thurning Feast Spinney

THURNING VILLAGE, NEAR OUNDLE, PE8 5RE

SAT 11<sup>TH</sup>/SUN 12<sup>TH</sup> MAY 12-5 PM

Follow The Magical Woodland Trail!

See The Fairy Houses Hidden in The Spinney!

Fairy Quiz - Mini Fair Rides - Teddy Tombola  
Face- painting, Crafts, Teas & Cakes, Bar, BBQ  
Children's Entertainer on Sunday

**£5 Per Person- Children Under 3yrs Free!**

(No Pre-Booking Needed - Just Pay At The Gate)  
Cash Or Card

Includes field car parking & picnic areas

All proceeds donated to St. James' Church  
with a donation to a local children's charity

STRICTLY NO DOGS PLEASE.

RESTRICTED AREAS FOR WHEELCHAIR USERS  
ENQUIRIES:

★ Sandy Capp - [sandra19capp@outlook.com](mailto:sandra19capp@outlook.com)

Alison Pilkington - [alisonajp@aol.com](mailto:alisonajp@aol.com)



# SURPRISE PRIZE BINGO



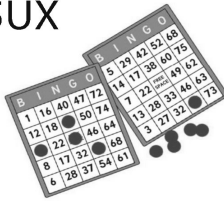
**Sunday 28<sup>th</sup> April**

**Eyes down at 2pm**

**At the CARESCO Centre**  
Behind the Old School Hall  
off Green End Road,  
Sawtry, PE28 5UX



**REFRESHMENTS  
AND RAFFLE**



*All proceeds to CARESCO's  
Christmas Day Party & Centre Gardens*



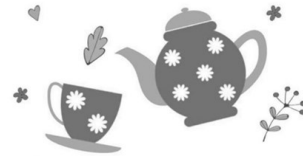
The CARESCO Centre, Green End Road, Sawtry, Huntingdon, Cambs, UK PE28 5UX  
office@caresco.org.uk 01487 832105 www.caresco.org.uk



Charity No: 1140728

Company No: 7513432

## SAWTRY COMMUNITY CAFÉ



*Open on the first Saturday of each month  
12 - 3pm*

*\* 6 April, 4 May & 1 June \**

*Open to everyone in the community  
at the WI Hall, Gidding Road, Sawtry, PE28 5TS*

*There is no charge for food*

*Join us for a warm welcome*

*Free Wi-Fi*



*Access to support available*



*Community Meals provided by  
volunteers from Sawtry WI and others  
Funded by local organisations and  
contributions*

*Enquiries and donations  
07841 647345*



# afvbc

ARMED FORCES & VETERANS  
BREAKFAST CLUBS

## SAWTRY

[www.afvbc.NET](http://www.afvbc.NET)

Welcome to the Sawtry Armed Forces & Veterans Breakfast Club.

We are a group of veterans and serving members of His Majesty's Armed Forces and part of a growing network of Breakfast Clubs in the UK and Worldwide.



There are no commitments or subs,  
just pay for your breakfast.

So come to a great place and meet like-minded people for support, chat and banter.

Our Breakfast Club meets  
Every 2<sup>nd</sup> Saturday of the month  
from 09.45

at The Greystones Public House, Sawtry

Interested? Then please register on our Facebook group  
*Sawtry Armed Forces & Veterans Breakfast Club*

(<https://www.facebook.com/groups/afvbc.sawtry>) or

Email: [sawtry.AFVBC@gmail.com](mailto:sawtry.AFVBC@gmail.com)



**cdā Hearing Help 2024**

## SAWTRY 2024

### Hearing Aid Maintenance Sessions

Clinics will run every 2<sup>nd</sup> Thursday from  
10am until noon at the CARESCO Centre.

**Dates:**

May 9  
June 13  
July 11

August 8  
September 12

No appointment necessary. Just drop in.

#### **Batteries**

Please collect from any Hearing Aid Maintenance session, no need to book.

You can also collect batteries from any  
**Cambridgeshire Mobile Library**  
[www.cambridgeshire.gov.uk](http://www.cambridgeshire.gov.uk)

#### **Donations**

Please consider donating as without constant support the charity cannot continue its vital work. Send a cheque payable to Cambridgeshire Deaf Association. Post To : 8 Romsey Terrace, Cambridge CB1 3NH

**Online** at [www.cambridgeshirehearinghelp.org.uk](http://www.cambridgeshirehearinghelp.org.uk)  
**In person** at any of our drop-in sessions

Please consider also becoming a regular donor by setting up a standing order via our website.

**We can then plan for our future help throughout Cambridgeshire.**



**Girlguiding**

**2<sup>nd</sup> Sawtry Brownies  
Tort Hill District**

**2<sup>nd</sup> SAWTRY BROWNIES NEEDS YOUR HELP!**

We are a thriving unit with girls presently ranging from 7-9 years old

We meet each Tuesday 6pm – 7.30pm during each school term at The Old School Hall in Sawtry

We are in desperate need of Adult Volunteers to join our team

It's 100% Voluntary and 100% Rewarding

If you are interested in helping us out, please go to [www.girlguiding.org.uk](http://www.girlguiding.org.uk) and click on Volunteer to register your interest

**PLEASE HELP OUR UNIT**

**THANK YOU**

**HOLME VILLAGE  
COMMUNITY SPEEDWATCH**

After the excitement of our first Nil Return last month, I am afraid we didn't match that again this time, but we will continue to try!

Community Speedwatch is a national scheme where proactive members of our local community join with the support and supervision of our local police to record the details of speeding vehicles through the village using approved detection devices.

Registered keepers of vehicles exceeding the speed limit are contacted initially with a letter explaining the potential risks and consequences of their dangerous behaviour. Repeat offenders will receive a visit from the local police irrespective of where they live.

Now that the evenings are drawing out and the mornings are much lighter, we will be increasing our sessions back up to the 1.5hr duration and be out later in the evening and earlier in the morning. If you have some time to spare each month and would like to join our merry little group, then please contact [csw.holme@btinternet.com](mailto:csw.holme@btinternet.com) and we will send you the guidance notes. You will then be given training by Cambridgeshire Police. To take part in a session you don't have to know your Mazda from your Maserati as there is usually one member of the group that is a car expert, or we can get all other details from the registration number. The most you will be asked to do is either remember the first three characters of a licence plate or oversee the tally counter (I have been known to even muck this job up!)

**PLEASE SLOW DOWN  
THROUGH OUR VILLAGES**



**BIG BREAKFAST**



**Sunday 28<sup>th</sup> April**



**Doors open at 9am**

**Breakfast served between 9.30am – 10am**

**At the CARESCO Centre**

**Behind the Old School Hall**

**off Green End Road, Sawtry, PE28 5UX**

**FREE  
COFFEE & TEA  
REFILLS**



**Tickets £10**

**Available from the**

**CARESCO Charity Shop, CARESCO Centre,  
or call 01487 832105 or 07743 216746**



*All proceeds to support the work of CARESCO*

**CARESCO**

meeting needs in our local community

The CARESCO Centre, Green End Road, Sawtry, Huntingdon, Cambs, UK PE28 5UX

office@caresco.org.uk

01487 832105

www.caresco.org.uk

Reg in England & Wales

Charity No: 1140728

Company No: 7513432



**HOLME YOUTH CLUB**

Hello lighter evenings! Where have you been? We now have permission to use the school field on a Friday night – subject to the weather of course. We're very lucky to be able to use this space alongside our village hall in the warmer months and this gives the children the opportunity to play football and have a run around without the confines of our car park!

In June we shall be sending out invitation to welcome current year 4's for 2 taster sessions at the end of the summer term and as numbers have been low, we are really looking forward to seeing some new faces.

Membership of Holme Youth Club is open to school years 5-10, who live in the village or attend or have attended Holme Primary Academy. As numbers have been low you are also welcome to bring a friend too. If you meet our membership criteria and would like to see what we are all up to, please pop in and see us at the Holme Village Hall, between 6:30 and 8:30pm on a term time Fridays and check us out.

**For further information please check us out on**

**Facebook @HolmeYouth or our**

**Website [HolmeYouthClub.co.uk](http://HolmeYouthClub.co.uk)**

**or email**

**[holmeyouthclub@outlook.com](mailto:holmeyouthclub@outlook.com)**

**Lynsey Caslin –**

**Chair of Holme Youth Club**







# FINALISED SAWTRY SHOW CLASSES - TO GET YOU STARTED!

Saturday 14 September 2024 Sawtry Village Academy

The full schedule with instructions and entry forms will be available from June.

## Fruit and Vegetables

1. 5 Runner bean pods
2. Longest runner bean
3. 5 French bean pods
4. 3 beetroots
5. 3 carrots
6. 3 courgettes
7. 3 onions
8. Heaviest onion
9. 3 bell peppers
10. 5 chillies
11. A truss of ripening tomatoes
12. 5 tomatoes
13. Heaviest marrow
14. 5 potatoes any variety
15. Pumpkin or squash
16. Misshapen fruit or vegetable
17. 5 eating apples
18. 5 pears
19. 11 blackberries
20. Tray of your 5-a-day, mix of fruit and / or veg

## Home grown flowers and plants.

21. 3 dahlia stems, may be mixed varieties
22. A vase of mixed herbs
23. 1 rose specimen, will be judged on scent
24. 3 rose stems may be mixed varieties.
25. 3 gladioli

## Pot plants

26. A fuchsia
27. A begonia
28. Cactus or succulent
29. Any flowering pot plant
30. Any foliage pot plant

## Flower Arranging (flowers may be bought)

31. A table arrangement for a Wedding
32. A modern arrangement using 3 flower stems plus foliage
33. An arrangement of berries, fruits and foliage

## Cookery

34. Victoria sponge 3 egg mix, jam filled, caster sugar on top
35. Men only – 'Dockey' cake from a given recipe\*
36. 5 Cheese scones
37. 5 Shortbread fingers
38. Treacle tart – from a given recipe\*

\*Recipe will be published in full schedule

## Preserves

39. Soft fruit jam
40. Stoned fruit jam
41. Lemon curd
42. Orange marmalade
43. Chutney any type
44. A jar of pickles

## Home Brews

45. A bottle of red wine, sweet
46. A bottle of red wine, dry
47. A bottle of white wine, sweet
48. A bottle of white wine, dry
49. A cream liqueur
50. A bottle of limoncello

## Crafts

51. A knitted item for a baby
52. A crocheted bag
53. An item which includes patchwork
54. An item from recycled wood
55. A wedding card
56. A piece of cross stitch
57. A teddy bear
58. A handmade brooch
59. A pincushion
60. Any other item not included in the above classes



## Art

61. A seascape
62. A portrait
63. A drawing of a mythical creature A4
64. A sculpture
65. A wedding cake topper
66. A collage using more than 4 materials
67. A miniature

## Photography

68. A beach scene
69. A sunset
70. A portrait of an animal
71. The night sky
72. A photo based on a proverb
73. A macro photo of a flower
74. Humour, with a caption

## Juniors

The following age groups will be judged in each of the classes listed below:

up to 5yrs (75-86) 6-8yrs (87-98) 9-12yrs (99-110) 13-15yrs (111-122)

- Photography - my favourite place in my village
- Craft - a decorated paper aeroplane
- Craft - a sock puppet
- Craft - a Lego model
- Craft - A model from plasticine or playdough
- Craft - item made from anything recycled
- Craft - a bug house
- Art - a decorated pebble
- Art - design your own book cover
- Art - a picture from my favourite book or story
- Art - A potato print
- Cookery - a teatime favourite

There will be a special prize for the aeroplane which flies the furthest!

Academy entries – To be decided

Message us through our Facebook page  
'The Sawtry Show' or email  
[thesawtryshow@outlook.com](mailto:thesawtryshow@outlook.com) for more info



## SAWTRY WI

Charity Number 229016

We start the new membership year in April and we are currently accepting new members. All women are welcome to join. You are very welcome to come as a guest free to two of our monthly meetings which are held on the first Thursday of each month at our WI Hall on Gidding Road, Sawtry, PE28 5TS. We start our meetings at 7pm with a speaker or activity followed by refreshments of tea, coffee, sandwiches and cake after which we discuss any business. We also have raffles, competitions, book stall and sometimes fresh produce and home-made jams. We hope you will visit us

### Programme for Members Meetings April 2024 to March 2025

4<sup>th</sup> April 2024 - Talk 'Boudicca of the Iceni and The Ninth Legion stationed at Longthorpe'.

2<sup>nd</sup> May 2024 - Talk 'Waste Minimisation Officer, Huntingdonshire District Council'.

6<sup>th</sup> June 2024 - Talk 'Perfecting Procrastination, Top Tips on avoiding the thing you know you should be doing' and 'Will I be fat in Heaven? and other things to ponder'.

4<sup>th</sup> July 2024 - Talk 'Sawtry History Society with archives and photos about Sawtry. Also Sawtry WI's 105<sup>th</sup> birthday with cake and celebration.

1<sup>st</sup> August 2024 - Race Night with prizes.

5<sup>th</sup> September 2024 - Talk 'My lifelong love of sports, how I came to be using a wheelchair and then moved on to sailing'.

3<sup>rd</sup> October 2024 - Talk Hedgehog Hotel 'Making Highways'.

7<sup>th</sup> November 2024 - Talk 'Tandem riding with People with visual impairment'.

5<sup>th</sup> December 2024 - To be confirmed.

January 2025 - No meeting.

6<sup>th</sup> February 2025 - Line Dancing.

6<sup>th</sup> March 2025 - Annual meeting and Social Evening.

March 2025 - Annual Spring Party 2025 Date to be arranged.

**Jacqui Svensson, President**

**07841 647345**

[sawtrywi@gmail.com](mailto:sawtrywi@gmail.com)

Instagram: [Sawtry\\_WI](#)

Sawtry WI | Facebook



**SATURDAY 8 JUNE**  
**12 NOON - 5PM**

**THE WILD WEST**

## CARESCO

meeting needs in our local community

### CARESCO GRANTS NEWS

For many years, CARESCO received financial support from Cambs County Council towards our Green End Day Club (GEDC) running costs. We were advised last year that this financial support would cease in 2024 and we would need to bid for any future funding, along with many other Day Clubs and Centres across Huntingdonshire. This caused the staff and trustees a lot of concern as the funding was not guaranteed and could have directly affected the provision of the club, not only for Sawtry attendees but for people who come in from our other Parish catchment areas.

We duly bid for the funding in December 2023 and were delighted to have recently had this approved for the next three years. The Council particularly liked the fact that we offer good value for money to support a substantial amount of people, felt the charge was very reasonable and were pleased that we could provide accessible transport if required. I would like to thank the CARESCO Finance Team and the GEDC staff in particular for their help in putting the successful bid together.

If you know of anyone who could benefit from attending GEDC, please contact Vicki or Suzanne on 07743 216746 or email: [greenend@caresco.org.uk](mailto:greenend@caresco.org.uk). The Day Club is based in the CARESCO Centre, Green End Road, Sawtry, PE28 5UX. Our catchment areas are; Sawtry, Stilton, Alconbury/Alconbury Weston, Folksworth & Washingley, Conington, Holme, Buckworth, Denton & Caldecote, Glatton, Great & Little Gidding, Hamerton & Steeple Gidding, Upton & Coppingford, Winwick and Woodwalton.



If you know of any organisations that offer charitable grants or donations, please contact Dee Pike on [grants@caresco.org.uk](mailto:grants@caresco.org.uk) or call CARESCO on 01487 832105. Donations, support or volunteers (we are looking for some additional trustees currently!) are always very welcome.

Thank you all.



## SAWTRY HISTORY SOCIETY

The Archive is now open on the Saturday following our Thursday meeting, in the Community Centre access is via the library, from 10:00am to 12:00pm. All are welcome, search census records & view old documents relating to our area.

Thanks to our Secretary we now have a programme planned for the first quarter of the year, this may be subject to change.

- ◆ April 18 AGM + Peter Clarkson MBE - Life In Antarctica
- ◆ May 16 Roger Leivers The House of Spies - Godmanchester in WW2

\*Please note the change of AGM date due to committee holiday arrangements\*

January, another entertaining presentation from Don Chiswel - The Knights Templar, a very good turnout for a cold winter's night. We were entertained by the rise & fall of the Knights / bankers of Europe, a very successful organisation until they upset the Pope, all delivered in Don's myth busting style.

February, Francis Saltmarsh - Six Into Two Will Go, Henry VIII a very unusual method of portraying a very detailed history of Henry & his wives. Francis' narrative was accompanied with the dressing of a mannequin in the style of each queen. You may think what went on while she changed the dresses but the verbal delivery was continuous, most impressed, she may be back!

The company that our previous Chairman Phill Hill works for is currently featured in a dig at Alconbury Weald, in Digging For Britain BBC2 / iPlayer with Alice Roberts, still available on iPlayer

Don't forget our sister website the details being [www.sawtryhistory.co.uk](http://www.sawtryhistory.co.uk) [sawtryhistory@gmail.com](mailto:sawtryhistory@gmail.com)

Sawtry Archaeology 'is a sub-group of Sawtry History Society. Further information can be found on the Sawtry Archaeology website [sawtryarchaeology.wixsite.com/my-site](http://sawtryarchaeology.wixsite.com/my-site)

You can also follow us on Facebook.

**The History Society meet at 7:30pm on the third Thursday of the month  
in the Methodist Church, 9 Green End Road, PE28 5UX.**

**For info call Chris Merton 01487 831441**

## AN EYE ON NATURE

I have seen a barn owl on my way home from Wistow to Sawtry on several occasions over the last 8 years. But at dusk at the end of January this year, not one or two but three in various locations on my journey. The third one near the Great North Road roundabout 'Wow!' that got me thinking of the other four British species of owl and the fact we can see all of them in our area.

Sawtry people are very lucky indeed, as within 15 minutes of the village (by car) all five species can be found and four nesting. So, what are the other four species and where do they like to 'hang out'. Aversley Wood in Sawtry is a dead cert for tawny owls and little owls nested for decades in the wonderful ancient oaks on Woolley Road near the A1 and still occur in the Great Fen.

Long-eared owls are the most secretive, so seeing them in Woodwalton or Holme Fens is a challenge. A give away in high summer if you just happen to be under a nest in a tree is the sound the mature chicks make, it's a bit like a squeaky barn door hinge which needs oiling.

The final one of the five is the short-eared owl, some migrate to this area in winter and arrive in autumn. Short-eared owls hunt in day light over farm land pasture or rough grassland and have been seen hunting over fields near Alconbury a few years ago. These days they are more reliably observed hunting on the Great Fen in the grassland areas.

I suggest a good bird book would help you identify the features of our owls but tawny owls are the species which make the classic owl hoot. It is unmistakable but did you know that the female makes the sharp 'ke-wick' (twit) and it's the male which responds with the 'hoo-hoo' (twoo). The male tawny owl uses his call to stake claim to his territory, while the female uses hers as a contact call, dueting with the male or keeping in touch with her chicks.

Barn owls are unmistakable; a grey ghost floating silently across the road in car headlights and sometimes flying along beside a wide grass verge. It is something which just makes life a little richer.

I am looking forward to my next owl encounter whether it's when I'm fishing in Ramsey St Mary's or badger watching in one of our local woods. Listening to tawny owls hooting during a badger watch is such a bonus.

I hope you too, will be lucky enough to enjoy one or more of our charismatic owl species on your travels around this richly blessed area. Just keep a sharp look out and you will eventually be rewarded because your first owl once seen will never be forgotten.

**Martin Baker**

The views expressed in this article are solely those of the author

**For more information, contact the Wildlife Trust: Phone 01954 713543, or  
visit [www.wildlifebcn.org](http://www.wildlifebcn.org)**







## SAWTRY CHORALE

Rehearsals are now well underway for the forthcoming summer concerts. Our Music Director has chosen a programme of exciting music which ranges from contemporary to classic, so there is something for everyone. Come along and enjoy some wonderful music in two of our beautiful local churches.

Venues for the two concerts are:

**Saturday 22 June @ 7.30pm**

**St Peter & Paul Church, Alconbury**

**Friday 12 July @ 7.30pm**

**St Mary the Virgin Church, Godmanchester**

Tickets £10.00 payable at the door by card/cash or contact Tracy Rickwood on 07796 972580 (Refreshments & Raffle available)

It is well documented that singing is extremely beneficial for our health, our social life and general well-being, so if you think it is something that you would enjoy, why not come to one of our rehearsals and see if it is for you?

We sing in four-part harmony and have an extremely patient and talented Music Director who helps to guide us through our section parts. There are no routine formal auditions or a prescribed requirement to read music, so nothing scary! We are particularly interested to hear from any men who may feel that they would like to try us out. We meet on Wednesday evenings at the Methodist Church Hall, Sawtry, from 7.30pm to 9.30pm.

You can contact us via:

- Facebook
- Email: [sawtrychorale@gmail.com](mailto:sawtrychorale@gmail.com)
- Website: [www.sawtrychorale.co.uk](http://www.sawtrychorale.co.uk)



We look forward to seeing you!

***For more information, please call 07870 248897, find us on Facebook, email [sawtrychorale@gmail.com](mailto:sawtrychorale@gmail.com) or visit [www.sawtrychorale.co.uk](http://www.sawtrychorale.co.uk)***

## Simon Bywater District & County Councillor

I would like to bring to your attention some important updates regarding recent decisions made by Huntingdonshire District Council (HDC) and Cambridgeshire County Council (CCC) joint administrations running the councils.

Firstly, it has been decided by both councils that there will be a full council tax increase starting this April, which will include the introduction of a new Bin Tax for garden waste. This change is significant, (the largest cost increase and reduction in service in Huntingdonshire's History) and I urge everyone to be aware and prepared for the adjustments in their household expenses. I did not support this decision as I believe it created a two-tier Garden waste Service, those who can afford it and those who can't.

Additionally, I want to highlight a recent vote regarding the allocation of funds for Highways Maintenance. Despite efforts to increase the budget by an extra £21 million, the proposed budget amendment that I supported was unfortunately not approved. This decision was made by the Liberal Democrat, Labour, Independent coalition-led administration. It's concerning to note that this coalition has consistently voted against increased funding for Highways Maintenance over the past three years, despite the pressing need for improved road repairs.

I recognise that many of you have noticed the declining state of our roads and the apparent lack of accountability from contractors. It's evident that there are issues with how funds are being allocated and managed. I encourage you to continue reporting any highways issues to the CCC, as your feedback is crucial in addressing these concerns.

We need to address a concerning issue regarding reckless driving behaviour. There have been reports of drivers disregarding pedestrian safety by driving over the grass and pavements from the shops on Green End Road into Papyrus Way. This behaviour is unacceptable and puts pedestrians at risk. Please refrain from engaging in such actions, as the police are aware of the situation, and those found doing this will be reported accordingly. This includes driving/parking on the grassed areas by the shops.

Lastly, A huge shout out to the amazing volunteers at our Sawtry fire station! Your dedication and bravery in keeping our community safe do not go unnoticed. If you can spare time, why not consider joining them in their noble mission? Your support could make all the difference. Thank you, volunteers, for your selfless service!

Don't forget you can see my regular updates on my Facebook page Cllr Simon Bywater Sawtry & Stilton

***Cllr Simon Bywater Sawtry and Stilton Division, Cambridgeshire County Council***

**07984 637553**

# THE ROYAL BRITISH LEGION SAWTRY & DISTRICT BRANCH

The Royal British Legion was established in 1921 after WW1 to support our Armed Forces community, Veterans and their families. The Sawtry Branch was formed in 1928, so we are approaching our Centenary. To provide the support, activities and fund-raising events requires active members of the Branch. We struggle each year to form a committee with some individuals taking on more than one post. Over the years our membership has declined and more so our active members. Without a committee the Branch will not survive, and we would really like to make it to our Centenary.

We need your help. Would you like to become a member of the RBL and our committee?

**Please consider becoming a member of the Royal British Legion.**

You can contact us by email: [sawtry.secretary@rbl.community](mailto:sawtry.secretary@rbl.community), via our Facebook page: Sawtry RBL or you can visit <https://www.britishlegion.org.uk/get-involved/things-to-do/membership> to join. Our Branch code is BR0610.

**Events** – It is the 80<sup>th</sup> Anniversary of D-Day. On Thursday 6 June at 9am the Parish will be raising a flag at the old school hall. This will then be followed by a wreath laying service at the Village Memorial.

**Poppy Appeal** – If you have donated then you have helped us raised £10,067.46 for the 2023 Appeal so far.

We will have a stall at the Carnival and will have the new 2024 pins and some D-Day 80<sup>th</sup> Anniversary pins along with other items to help us raise more money. You will be able to donate by QR code.

Thank you for all your support and to our volunteers.

**Billy  
Chairman**



Wildlife Trust for  
**Beds, Cambs  
& Northants**

## Huntingdonshire Local Group

**Portholme Meadow - Saturday 20 April at 10.30am**

Dr. Pat Doody will lead this walk and will focus on one of Portholme's specialties, the snakeshead fritillary. We also hope to see and hear corn bunting and skylark. Please meet at the entrance to the meadow at Godmanchester Lock, TL241704. What3words: amused.finishing.bulky. Nearest postcode PE29 2NB.

**Brampton Wood - Sunday 28 April at 10.30am**

Our annual bluebell walk will be led by George Cottam and other Wardens, depending upon demand. We will look at the rich variety of spring flora, focusing on the bluebells. We also hope to see and hear the wonderful birdsong at this time of year. Please meet at the Visitors' Barn, near Brampton Wood Car Park, Grafham Road, Brampton, nearest postcode PE28 0DP. GR TL 184699. What3words:skinning.rhino.headboard.

**Both walks take approximately 2 hours.**

**Please note that paths at both sites are very uneven and likely to be wet**

**Everyone is most welcome to attend. There is no charge, but donations are welcome.**

**For more information please contact George (01480 450809 or [georgecottam@virginmedia.com](mailto:georgecottam@virginmedia.com))**

**Part of the Wildlife Trust for Bedfordshire, Cambridgeshire and Northamptonshire**

**Registered Charity No: 1000412**

## SAWTRY INFANT SCHOOL

Despite this term being very short, we have kept very busy on the lead up to the Easter holidays. There have been a variety of in school events as well as well as lots to prepare for in the summer term.

World Book Day was, as always, a huge hit and we thank our Deputy Head, Mr Alletson for making this event an absolute pleasure. The children loved hunting for the Golden Gruffalos in our library and dressing up as their favourite book characters. Our masked readers were enjoyed by all. If you haven't already spotted them on our website, please check them out to see if you can guess which members of staff are behind the masks. If you're not familiar with us, it's worth having a look for a giggle: <https://www.sawtry-inf.cambs.sch.uk/masked-reader-2024/>

For Red Nose Day we have enjoyed a Crazy Hair Day alongside raising money for this amazing charity. The children celebrated with a range of activities and a fun music and dance filled session on the junior school playground alongside our friends at Sawtry Junior Academy.

Next term we are looking forward to our usual summer line up such as sports day, our summer fayre and all our transition activities as well as an African Drumming session as part of our international week festivities!

Wishing you all a happy Easter and hoping for some warmer and drier weather so we can all enjoy the changes in the seasons.

**Mrs Trace and the Sawtry Infant School Family**  
**01487 830678 - [office@sawtry-inf.cambs.sch.uk](mailto:office@sawtry-inf.cambs.sch.uk)**



## SAWTRY CAMERA CLUB

The Camera Club meets once a month, on the third Thursday of the month, at the Sawtry Social Club in Gidding Road, 7.30pm start.

The members have a variety and a wide range of different makes and types of cameras.

So if you would like to join us you might have a bridge camera or a small digital or maybe use the camera on your phone, it doesn't matter all are welcome. You must download your images to a USB stick.

If you would like to join us, please email me at [sawtrycameraclub@gmail.com](mailto:sawtrycameraclub@gmail.com) and each month you will be sent the subject title for the monthly meeting.

Looking forward to hearing from you.

**Neville Diss**



## CARESCO CAR SCHEME

*Providing transport for local people*

Run by volunteers using their own cars, journeys (to medical appointments only)

can be booked via the Co-ordinator  
9am - 5pm, Mondays to Fridays only

(subject to availability)

on **07810 476979**

Please leave a message, your name & phone number and the team will get back to you as soon as they can

Contact CARESCO on 01487 832105 **CARESCO**  
Email: [office@caresco.org.uk](mailto:office@caresco.org.uk)



## NEWS FROM SAWTRY LIBRARY

Sawtry library offers a range of services and activities. You can use our free pcs to access the internet and you can print and photocopy for a small charge. For children we run regular sing-along sessions as well as a Lego Club. Along with a wide range of books in the library you can also use your free library account to access e-books, e-audio, newspapers, magazines and reference databases such as Encyclopaedia Britannica. You can also research your family history for free with Ancestry.com.



### Door Hanger Craft - Wednesday 10 April 10.30am-12.00pm

Have fun over the Easter holidays making and decorating your own door hanger for your bedroom!  
For children aged 4+, £1 per child. This is a drop-in event so no booking required.

### Plant Heritage UK - Wednesday 10 April 2.30pm-3.30pm

Plant Heritage UK is the country's leading garden plant conservation charity and is best known for the National Plant Collections. This talk highlights the collections held in this region, and some of the interesting stories behind the plants.

Adults only. Free event. Booking required.

### Volunteers for Summer Reading Challenge

We are starting to think about this year's Summer Reading Challenge at Sawtry library and we need your help. If you are aged between 12-18 and know that you will have lots of spare time over the summer holidays, then why not sign up to be a reading challenge volunteer.

As a volunteer you would be asking children about the books they have been reading, recording their progress and giving them stickers during the six weeks holidays.

If you are interested just pop into Sawtry library from the beginning of May to pick up an application form.

### Rhymetime - Wednesdays 10.30-11.00am (Term-Time only)

Come and join in with some popular songs and rhymes at our weekly Rhymetime sessions for children under 5. FREE drop in event.

### Digital Buddy Sessions - Every Wednesday from 2.00-3.00pm

If you are not confident using computers or need help finding information online or completing online forms, then come along to one of our buddying sessions. Our volunteer will be able to teach you basic computer skills and show you how to do simple online tasks. No need to make an appointment just drop in.

### Lego Club - Saturdays 10.00am-12.00pm

Get creative and constructive at our Lego Club every Saturday morning. Drop in anytime throughout the session. Suitable for children aged 4+, 50p Donation appreciated.



### Bus Pass Assistance

Is your Bus Pass up for renewal? Do you need to apply for your first Bus Pass? If so, pop into Sawtry library and staff there will be happy to help you complete the online application form.

### Social Media

Please look at our social media pages for information, updates and events. You can find us on Facebook by searching for 'Cambridgeshire Libraries' and on Twitter we are @cambslib.

### Opening Times

Monday	Closed
Tuesday	3.00pm - 7.00pm
Wednesday	10.00am - 1.00pm and 2.00pm - 5.00pm
Thursday	Closed
Friday	3.00pm - 5.00pm
Saturday	9.30am - 12.30pm

**Paul Smith,**  
**District Library Assistant,**  
**Huntingdon, Yaxley and**  
**Sawtry Libraries**







## Sawtry Parish Council

Serving the people of Sawtry

We welcome Martin Bhamra and Grant Fitzgerald who were co-opted on to the council in February. James Gillespie has stood down as a councillor and we thank him for his contribution. This means we still have two vacancies for Councillors, if you are interested or would like to find out more, please contact the office for details of how you can be co-opted. The Parish Council meet on a Wednesday at 7.30pm, 11 times a year with additional sub committees meeting quarterly.

Think your community deserves to be seen? Anglia in Bloom actively invites and encourages all communities to participate in the unique horticultural and environmental initiative and demonstrate that their efforts are making a difference to their local environment. We are therefore looking for groups, individuals and businesses to get involved in an entry for Anglia in Bloom 2024. Please contact [admin@sawtry-pc.gov.uk](mailto:admin@sawtry-pc.gov.uk) for more details and how to get involved.

Work continues at Greenfields pavilion to extend and refurbish facilities – look out for details of the grand reopening.

Community Defibrillators – there have been two more installations of equipment one at St Judith's Field and the other outside the Working Men's club. This is in addition to the ones provided for Greystones PH and outside the Old School Hall.

The Parish Council recently provided Sawtry litter pickers with grabbers and gloves to support this very active group who do a great job to help keep our community clean and tidy.

Two new dog bins have been installed, one on Haynes Close and one at the bottom of Peacock Drive making a total of 21 in the village. Bags for cleaning up after your dog are available from the office for a cost of £1 per 100, these bags are oxo-biodegradable.

A date for your diary is the Annual Parish Meeting to be held on 22 May at the Old School Hall.

Our website [www.sawtry-pc.gov.uk](http://www.sawtry-pc.gov.uk) offers information for parishioners.

**Steve Browning - Clerk to Sawtry Parish Council**

**37 Green End Road, Sawtry, Huntingdon, PE28 5UY**

**Tel: 01487 831771 Office Open: 9.00am - 1.00pm Mon - Fri**



Wildlife Trust for  
**Beds, Cambs  
& Northants**

## Huntingdonshire Local Group

### Barnack Hills and Holes

**Tuesday 4 June at 7.30pm at Barnack Hills and Holes, near Stamford**

Barnack was once a medieval limestone quarry, but now supports a profusion of wild flowers and butterflies. This site is managed by the Langdyke Trust and is currently designated as a Special Area for Conservation to protect its orchid rich limestone grassland. Eight species of orchid have been reported here, some of which we will see, along with many other flowers such as rockrose, wild thyme, quaking grass and ox eye daisy. We can also look forward to seeing many butterflies, such as small heath, skippers and blues.

Being an old quarry, the paths are very uneven and often steep. The walk will be led by Ross Edgar and/or Catherine Weightman of Natural England and we hope to have a wonderful evening there.

Please meet at 7pm in the car park on Wittering Road, GR TF074048, [what3words collect.riverbed.seaweed](http://what3words.collect.riverbed.seaweed). Everyone is most welcome to attend. There is no charge, but donations are welcome.

### Monks Wood

**Sunday 14 July at 10.30am at Monks Wood, near Sawtry**

Monks Wood is a National Nature Reserve and an area of ancient woodland, hosting a wide range of woodland flowers, insects and birds in addition to a variety of trees, including wild service trees. Our main focus today will be to look for butterflies and we hope to see silver washed fritillary, meadow brown, ringlet, green veined white and gatekeeper among many others.

Please meet at 10.30 am in the layby on the B1090, GR TL202809, [what3words broth.reheat.order](http://what3words.broth.reheat.order). Please car share where possible as parking is very limited. Paths are narrow, steep in places and often surprisingly muddy, so stout footwear is advised. Everyone is most welcome to attend. There is no charge, but donations are welcome.

**For more information please contact George (01480 450809 or [georgecottam@virginmedia.com](mailto:georgecottam@virginmedia.com))**

**Part of the Wildlife Trust for Bedfordshire, Cambridgeshire and Northamptonshire**

**Registered Charity No: 1000412**



# SAWTRY METHODIST CHURCH

9 Green End Road, Sawtry, PE28 5UX



*All Are Welcome!*

## COFFEE MORNINGS

*Open Saturdays  
in the church hall  
from 9.30am to 11am*

*Drop in for light refreshments,  
a chat with friends  
all proceeds to the church*



*We would love to see you!*

## SUNDAY WORSHIP

*There is a service either in the building, online,  
(using Zoom), or both every week*

### SPECIAL SERVICES

**Good Friday Walk Of Witness**  
**Friday 29 March**

*Walk starts at 10.00am from All Saints' Church,  
joint service at the Methodist Church at 10.30am.  
Followed by Fish and Chip lunch*

**Easter Sunday Celebration**  
**Sunday 31 March at 10.30am**

**Holy Communion**  
**Sunday 21 April at 10.30am**

**Holy Communion**  
**Sunday 19 May at 10.30am**

*For details of other services, how to login  
via Zoom, and for other services  
please check our website, or call 01487 830345*

*Come and join us, all are welcome*

## SAWTRY MONDAY FRIENDSHIP GROUP

*Meets fortnightly from 2.00 – 3.15pm in the Church Hall  
Second and Fourth Mondays*

*This is an informal fellowship group, sharing experiences, memories and plenty of laughter!  
Quantities of coffee, tea and cake available (of course!!). All are welcome*

**Contact Margaret Wilson 07794 607985**



**For more information, please contact Rev James Bamber on 01480 453857**

**Email: [jjamesbamber@gmail.com](mailto:jjamesbamber@gmail.com), or via [www.sawtrymethodist.org.uk](http://www.sawtrymethodist.org.uk)**

**Find us on Facebook - SawtryMethodistChurch**

## ‘DOING GOOD’ WAS USED TO ‘LOVE OTHERS’

Hello,

May 24<sup>th</sup> is a significant date in the Methodist Church's calendar. It is the day when we remember the founder John Wesley's transition from relying in his own efforts to accepting God's grace, a transition that brought positive changes to communities, and has continued to do so. The energy Wesley had previously put into 'doing good' was used to 'love others.'

As we journey through the Easter season we remember God's immense generosity and love for all creation. The prophet Isaiah in chapter 58, verses 1 – 9a declares that acts of worship cannot be separated from acts of service – our Easter faith has to make a difference to how we live.

How could we integrate the challenge of John Wesley into our lives more fully? 'Do all the good you can, by all the means you can, in all the places you can, at all the times you can, to all the people you can, as long as ever you can. One author writes, 'Lose yourself in generous service and every day can be ... an abundantly rewarding day.'

Christian Aid week also falls in May and helps us to remember the global dimensions to this call to live generously.

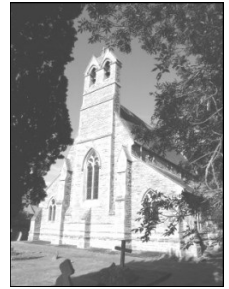
All best blessings,

**Rev James**

**(Minister, Sawtry Methodist Church)**



**ALL SAINTS', SAWTRY,  
ST NICHOLAS', GLATTON  
& ST GILES', HOLME WITH CONINGTON  
PARISH CHURCHES**



**BENEFICE DATES FOR YOUR DIARY**

For latest service information and online service links please visit [www.fenedgechurches.org](http://www.fenedgechurches.org)

Date	All Saints', Sawtry	St Nicholas, Glatton	St Giles, Holme
Sunday 7 April	10.30am - Holy Communion	9.00am - Morning Prayer	9.00am - Holy Communion
Sunday 14 April	10.30am - Service of the Word	9.00am - Holy Communion	--
Saturday 20 April	4.00pm - Messy Church	--	--
Sunday 21 April	10.30am Holy Communion (Followed by APCM)	—	9.00am - Holy Communion
Saturday 28 April	8.00am - BCP* Holy Communion 10.30am - Morning Prayer	9.00am Holy Communion (Followed by APCM)	--
Sunday 5 May	10.30am - Holy Communion	9.00am - Morning Prayer	9.00am - Holy Communion
Saturday 11 May	—	—	2.00 - 4.00pm Coffee and Cake 4.30pm - BCP Evening Prayer
Sunday 12 May	10.30am - Service of the Word	9.00am - Holy Communion	3.00pm <b>CONINGTON</b> BCP Evening Prayer
Sunday 19 May	10.30am - Holy Communion	--	9.00am - Holy Communion
Sunday 26 May	8.00am - BCP* Holy Communion 10.30am - Morning Prayer	9.00am - Holy Communion	

\*BCP *A much loved traditional service using the 1662 prayer book*



Fen Edge Churches

St. Nicholas Glatton, St. Giles Holme and All Saints' Sawtry are known as Fen Edge Churches and we have a brand-new website under construction celebrating this. [www.fenedgechurches.org](http://www.fenedgechurches.org) shares the latest information, all the most up to date details

of services and events plus gives access to useful information about Life Events.

As a church community, spring offers us a chance to look forward to the year ahead, we host our annual meetings and just as the bulbs come up, trees blossom and lambs skip across the fields we look forward to all the possibilities before us.

Youth Space, Little Saints and our collaboration with Coffee Ark are woven into our vision to offer radical hospitality and love people where ever we are, plus we have some new ventures in the making. We are delighted to have completed the heating and lighting project at St. Giles Holme and extend a genuinely warm welcome to our services and events in the church building – 9am services on the 1<sup>st</sup> and 3<sup>rd</sup> Sundays of the month plus special concerts and activities...keep an eye out for details. We also launch the Bible Course on the 15 April exploring what the bible is, why, where, when and what this best-selling book can offer all of us. Join us at 7pm if you would like to order food and 8pm for the session at The Greystones Mondays (starting 15 April). I look forward to seeing you there.

Huge Blessings,

**Reverend Canon Becky Dyball**  
[revdyball@gmail.com](mailto:revdyball@gmail.com)



## ENGAGED? THINKING OF GETTING MARRIED?

Did you know that you can get married in your local parish church - All Saints' Sawtry, St. Giles Holme and St. Nicholas Glatton.

We love ♥ a wedding and would love to discuss how we can play a part in your special day.

Please look at our website [www.fenedgechurches.org](http://www.fenedgechurches.org), be in touch Reverend Canon Becky Dyball.

Email: [fenedgechurches@gmail.com](mailto:fenedgechurches@gmail.com)

Phone: 07444 574039  
01487 506217



# Youth SPACE

EVERY SUNDAY IN  
TERM TIME  
(YEAR 7 AND UPWARDS)  
6.00PM - 7.30PM  
ALL SAINTS'  
CHURCH



REMEMBRANCE

## REMEMBRANCE

The Sawtry and District Branch of the Royal British Legion  
remember the fallen throughout the year



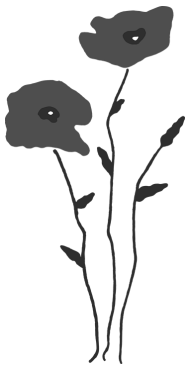
REMEMBRANCE

### APRIL

Private Bertram David HAYNES	19 April 1917	Sawtry
Private James STAPLETON	19 April 1917	Sawtry
Private Reuben GRAY	23 April 1917	Wood Walton
Private James REID	6 April 1918	Great Gidding
Private George Henry COLBERT	12 April 1918	Holme
Private Frank WILLIS	24 April 1918	Holme
Trooper Reginald ELSOM	23 April 1943	Sawtry

### MAY

Private William WRIGHT	3 May 1917	Sawtry
Private Arthur YEOMANS	3 May 1917	Great Gidding
Private Archie ROWELL	13 May 1917	Sawtry
Private Charles William BODGER	5 May 1918	Old Weston
Private Leslie Charles REDHEAD	20 May 1940	Great Gidding
Private George Joseph William GINNS	28 May 1943	Sawtry
Lance Sergeant Robert KETTERINGHAM	29 May 1944	Sawtry



*They shall grow not old as we that are left grow old  
Age shall not weary them, nor the years condemn.  
At the going down of the sun and in the morning  
We will remember them.*

## SAWTRY GOLF SOCIETY

Sadly, due to the poor weather we have not been able to play Golf since December, but we finally got a game in March, it was one of our "majors" the 3 club challenge, where as the name suggests each golfer can only take 3 clubs out on the course with them. Ironically every year the winning score is the same if not higher than when we take all our clubs out with us. This year was no exception on a damp but very playable Orton Golf Course the days winner was AJ Longford who finally, and after many games, managed to get his new clubs working and won with 37 points. He was 2 points ahead of our league leader Tony Morley with Micky Bosworth in third a further point behind.

Next up for us is our Charity Day at Thorpe Wood on 13 April where we also have a Grand National Sweepstake and raffle, we meet up at Sawtry Club after the golf to watch the race, so if you are interested in joining our society, come along and say hello.



**Sawtry Golf Society accommodates local golfers from scratch to 54 handicaps, we welcome all comers who enjoy a round of golf, if you are interested, please contact us on our Facebook page or ring our secretary Dave Gadsby (07834 386632) our membership is £20 for the season which includes insurance.**





## SAWTRY COLTS

Wet, Wet, Wet..... not the late 80s/early 90s Scottish band, more the state of all the Sawtry Colts pitches - be they at Sawtry Junior, Sawtry Village Academy or over at Greenfield. It has been an extremely wet winter, as I'm sure you've noticed, and it seems like a pitch inspection has been needed every week to see if the pitches have been playable. Hopefully the rain will recede and the pitches can dry out to allow us to finish the season. Below are few of the older teams' results to show that we have actually been able to play some football!

The U16 team had an eventful cup run - drawing 1-1 against Eynesbury before defeating them in a penalty shoot-out. That led to a semi-final against Fenstanton where a late penalty for Fenstanton pegged them back to 2-2, meaning another penalty shoot-out. Despite some excellent penalties they went down 5-4. Nevertheless, it was two excellent results against the teams 2nd and 3rd in the league. League form has also improved with a 3-2 victory over Needingworth, 1-1 draw against Oundle and a 2-0 loss to Kimbolton. Three matches remain for the side this season.

The U15s also had a small cup run beating one St Ives Team 3-2 before losing in the semi-final to another St Ives team 5-3. Recent losses in the league to St Ives, Godmanchester and Ramsey mean they sit 6th in their 10-team league with 4 matches left to play.

The U14s have had recent wins against March and Godmanchester but their best performance was when they defeated, previously undefeated league leaders, Wimblington 3-1. They went 1-0 down but did not lose heart and came back strongly to get the win. They have a shed load of games left having only played just over half their matches. They sit third in the league but could still be in with a shout for the title if they win all their matches in hand; good luck to them.

The U13s have had recent wins against Priory and Somersham, draws against Fenstanton (a rare 0-0!) and St Neots and losses to Eynesbury and Chatteris. They sit 3rd in their league with 8 matches still to play so could finish anywhere between 1st and 6th!

The U12 Yellows have recent wins against Godmanchester (as well as a 1-1 draw), March and Blunham. Losses against Ramsey and a disappointing loss to Needingworth means they sit 5th in their league with 6 matches to play.

The U12 Blues defeated Sandy 4-2 at home and drew 3-3 with them away. Victories against Blunham and Godmanchester means they are currently in 2nd place, one point off the lead, with 5 matches still to play. It could all go down to the last day as they play league leaders Whittlesey in their last match, exciting times could lie ahead.

The U12 girls' team (the Sawtry Falcons) have lost to Peterborough, Witchford and Netherton and recorded 1-1 draws against Cambourne and Girls United. They are 8th in their 11-team league with 8 matches still to play.

**As usual, a reminder of the Sawtry Colts website, available at [sawtrycoltsfc.co.uk](http://sawtrycoltsfc.co.uk), where details of all the teams can be found as well as managers' contact details should any aspiring players wish to find a team.**

**Brian Craig - [sawtrycoltsfc.co.uk](http://sawtrycoltsfc.co.uk)**



## SAWTRY WALK TO RUN

SAWTRY  
WALK TO RUN

Our successful and **FREE** to join None to Run course is starting again in May. We offer this free to participate course every year and this year it falls in May with lovely light nights :). We will help you get from your current level up to running 5k continuously in 10 weeks. The Course starts on the 7 May and the course ends with taking part in Peterborough parkrun on the 13 July. To take part please



contact the club via e-mail at [none2run@gmail.com](mailto:none2run@gmail.com). We understand this can be daunting prospect so we are having a drop-in session at Sawtry Leisure reception on 2 May at 6.30PM to ask any questions and meet some of the team if that helps ease and concerns you may have.

It's been a wet few months for our members keeping up with their running since Xmas well done for getting out and keeping it going.

As well as club runs we have members taking part in many local events including the Cambridge 1/2 Burleigh 7 Oundle 20 and Stamford 30K to name just a few.

Annual membership is due in April the cost remains only £20.00 for the 12 months which is fantastic value supported by English Athletics qualified leaders.

For the 3rd time we will be holding the Sawtry 10 Mile road race on the 8 September at 10.00AM.

Last year we saw an increase in numbers and supporters which was fantastic as more people become aware of our event. As before Sawtry Village Academy and Academy Leisure are supporting us with Race start and HQ facilities and I'm reassured of the continued support of local businesses this year too. We look forwards to showcasing Sawtry to a wider group of people. If you'd like to help on the day please contact me because events like this don't happen without the support of the community. We hope to continue to be able to raise funds for local charities and continue to give back to the village.

More details about our road race and temporary traffic works will be in future articles.

**David Bartle, Club Chair**

Call David on 07703 174937 or contact Fiona Hurst our membership secretary at [fionahurst@hotmail.co.uk](mailto:fionahurst@hotmail.co.uk) for details.

**More info at [www.sawtrywalktorun.co.uk](http://www.sawtrywalktorun.co.uk) or our Facebook page: Sawtry Walk to Run**



*Running - it's much more fun than you might think!*

## SAWTRY TABLE TENNIS CLUB



### Club News

The club now only meets on a Monday evening. The Club Night evening is split into sessions. Players are asked to pre-book onto the sessions.

#### Mondays sessions are:

- 5:45pm to 6:30pm – Junior Development Session.

These sessions are for young players aged 7 to 18 years old (Junior Members). They are for juniors who are just about to start or have already started their table tennis journey. They are designed with fun in mind but with some structure.

In these sessions, they will learn the total basics of table tennis; Grip, Ready Position, Movement and Striking, Serving, Backhand, Forehand, Backhand and Forehand Combos, Rules of the game, Match Play and most of all sportsmen like behaviour.

\*Junior Players are asked to pre-book before attending any of the 5:45pm sessions. To book see details at the bottom of this article.

- 6:30pm to 7:45pm/9:45pm (Playing League Match) – Open Play Adult Session (Invited - U18's).

These sessions are Open Free Play (so you can play who you want, when you want). They are for adult players, plus the stronger junior members who have been invited or passed the club's grading. Players can play some fun and leisurely table tennis or some competitive table tennis.

\*As of the 13 May, there will be **NO NEED** to pre-book before attending any of the 6:30pm sessions.

To keep up to date what is happening at the club, look at our Facebook page or website (see below for details).

### League News

The league is coming to a close, both teams have played some great matches, with the B Team getting through to the Semi-Finals of the Handicap Competition. We hope to bring you news of how they did in the next issue.

#### The club meets at the club's venue:

Sawtry Junior Academy, Middlefield Road, Sawtry, Huntingdon, Cambridgeshire. PE28 5SH.

There are **No Membership Fees**, only Club Night fees: Adults - £3, Junior (under 18's) - £2 per session, per night. Fees are payable on the night and can be paid by Cash or Card. All Under 16's will need to be always accompanied by a responsible adult while at the club.

**To keep up to date with what the Club is doing check out our website or Facebook:**

[www.sawtrytabletennisclub.org.uk](http://www.sawtrytabletennisclub.org.uk)

[@SawtryTableTennisClub](https://www.facebook.com/SawtryTableTennisClub)

**If you are interested in joining us, please feel free to contact the Club via email: [welcome@sawtrytabletennisclub.org.uk](mailto:welcome@sawtrytabletennisclub.org.uk) or call: 01487 804040**

## SAWTRY AND DISTRICT BOWLING CLUB

Planning has begun for the new season, starting with our traditional 'Opening Day' on Saturday 20 April, when members compete for the Kelvin Cooper Trophy.

The club is celebrating its 50<sup>th</sup> Anniversary this year, and we have arranged mixed games with the Bowls England Disability Team, as well as Hunts County. We are also looking to have a game versus Hunts Federation. In addition, we have a number of friendly matches against local clubs.

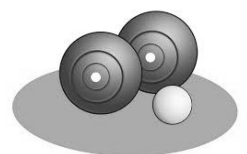
New players are always welcome and we will be participating in the Bowls England 'Big Weekend' on Monday 27 May, when the gates will be open for anyone new to the game to come along and give it a try. All equipment will be supplied, just wear some flat soled shoes or trainers. If anyone is interested, then please get in touch so that we can make sure we have everything you need. It doesn't matter who you are, or how good you might be, everyone will be welcome. We have some disabled equipment to hopefully help those that may need some assistance to bowl, including a grass specific wheelchair.

However, if you can't wait until 27 May, or won't be around, pop down any Friday night in May and there will be someone to help you give it a try. Failing that just pop in anytime the gates are open and speak to someone there.

Our Junior Coaching sessions start on Saturday 11 May. If any new Juniors are interested in attending, please get in contact (details below).

Please note the Tuesday afternoon roll-ups will start on Tuesday 23 April, with the chance to get together and have light refreshments from midday, before the bowling starts at 2pm.

Finally, work will begin on preparing the green and surrounds every Wednesday morning starting on 3 April – weather permitting. If anyone is able to help with some light work around the green to make it look nice for our 50<sup>th</sup> new season, then please come along from 9.30am - Midday. Tea/Coffee makers are also very welcome, to go with the bacon sarnies!!!!



**Any Queries contact - Club Secretary Kevin Bowers - Tel No 07989 503740**

**Visit our Facebook Page - search 'Sawtry and District Bowling Club'**

**Our website :- <https://hugofox.com/community/sawtry-and-district-bowling-club-8948/about-us>**

**Or search for 'Sawtry and District Bowling Club'**



# KI KONG TANG SOO DO KOREAN KARATE & KICKBOXING



## Promotions

### Kickboxing

White Belt Black Tag - Harvey Alexander  
Orange Belt Tag - Ryley Nightingale

### Tang Soo Do Karate

White Belt Black Tag - Harvey Alexander  
Orange Belt Tag - Ryley Nightingale,  
Black Belt - Steve Pettener,

## Events

Monthly Martial Arts Seminars in Sawtry  
13 April - 10.00am Martial Arts Seminar in Sawtry  
4 - 5 May UK Martial Arts Show  
5 May Black Belt Hall of Fame Awards  
11 May - 10.00am Martial Arts Seminar in Sawtry  
18 - 19 May Gathering of the World Masters

**Instructor - Grand Master Mark Adlington**

**Location - Private Gym Sawtry**

**Contact - 07585 950923 - [markadddd@gmail.com](mailto:markadddd@gmail.com)**

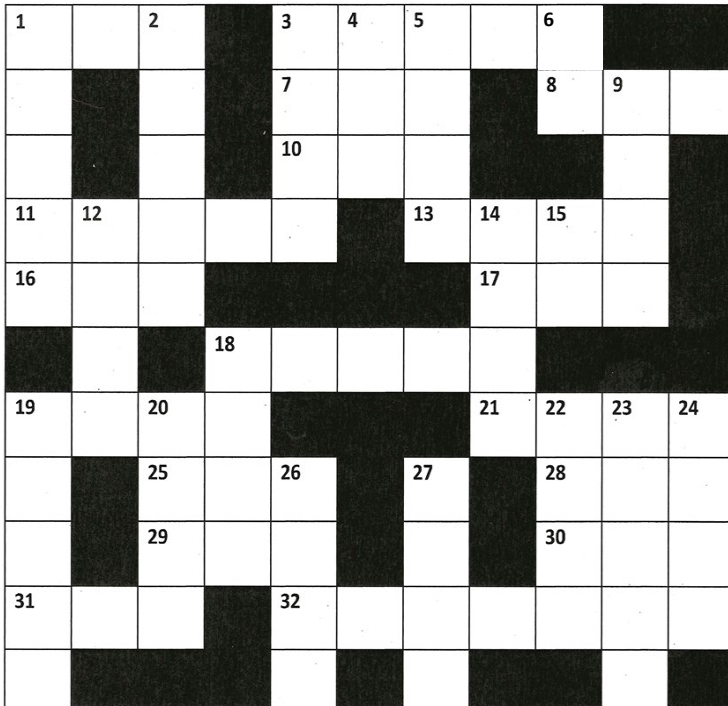
**Facebook Page - Ki Kong Tang Soo Do - Health & Self Healing**

## Classes

Classes and advanced classes can be booked any day and time if we don't have another class running

Weekday	Time	Class
Monday	5.30pm	Family Class
Tuesday	5.30pm	Healing Class
Tuesday	6.30pm	Adult Class
Wednesday	Open for Booking	
Thursday	4.30pm	Family Class
Thursday	5.30pm	Healing Class
Friday	5.30pm	Family Class
Sunday	10.00am	Family Class
Sunday	11.00am	Adult Class

# CROSSWORD



## ACROSS

- 1 - We sometimes do this when we are unhappy, sad or even happy
- 3 - When we are happy we do this also
- 7 - Baby chicks are hatched from this
- 8 - Time of day or the name of a woman
- 10 - Small worm-like fish
- 11 - The opposite of outer
- 13 - Twelve months makes this
- 16 - To work on something dishonestly
- 17 - Used to express one or a number of things
- 18 - Special or original style
- 19 - To be afraid of someone or something
- 21 - Opposite to early
- 25 - We sleep on this
- 28 - To ask for something in a humble way
- 29 - Farmland: Pasture or Grassland e.g.
- 30 - Fail to keep up with others
- 31 - A cereal grain
- 32 - Leaves rubbish such as can, bottles etc. paper e.g. lying about in public places

## DOWN

- 1 - We sit on this
- 2 - The early stage of life or growth
- 3 - Gaze at in an unpleasant manner
- 4 - How long we live
- 5 - Very unpleasant to look at
- 6 - Referring to a male
- 9 - Differ in size or amount for example
- 12 - Night spelled another way
- 14 - A British or Irish nobleman
- 15 - An indefinite article used words beginning with a vowel
- 18 - Not imprisoned or under anyone's control
- 19 - Consisting of fire
- 20 - Having the power or skill to do something
- 22 - Same as 20 down
- 23 - We shed these when we do as 1 across
- 24 - The yolks are mostly yellow
- 26 - An open valley
- 27 - Another type of cereal

# JUST FOR FUN

Look out for the answers in the next issue

Our thanks to Cecilia for submitting the Crossword



# USEFUL CONTACTS

## Doctors / Pharmacy

Wellside Surgery, Sawtry - 830340

Lakeside Healthcare at Yaxley - 01733 240478

Sawtry Pharmacy - 832558 (Boots)

## Children's Groups

Beavers/Cubs/Scouts - 01480 581072 or  
gsl@1stsawtryscoutgroup.org

Girlguiding, Sawtry (Rainbows, Brownies, Guides,  
Rangers & Y.L) - torthilldistrict@gmail.com

## Village Groups

Sawtry Camera Club - 07494 067666

Sawtry Chorale - 07870 248897

Sawtry History Society - 830715

Sawtry Motorcycle Club - 834190

Sawtry Women's Institute - 07841 647345

## Sport Clubs

Ki Kong Tang Soo Do - 07585 950923

Merton Kenpo Academy I MKA - 07753 228439

Sawtry & District Bowling Club - 07989 503740

Sawtry Colts - www.sawtrycoltsfc.co.uk

Sawtry Cricket Club - 07943 526379

Sawtry Football Club - 831403

Sawtry Golf Society - (Secretary) - 07834 386632

Sawtry Greenfields Fishing Lake - 07426 334079

Sawtry Junior Cricket Club - 830581

Sawtry Badminton Club - 07976 054613

Sawtry Table Tennis Club - 804040

Sawtry Tang Soo Do - 07864 260338

Sawtry Walking Group - 830167

Sawtry Walk To Run - 07703 194937

## Churches

All Saints' Church, Sawtry (Rectory) - 506217

St Benedict's Catholic Community Sawtry - 830680

St Luke's Catholic Church Peterborough -  
01733 230464

Sawtry Methodist Church - 830345

## Pre-Schools / Schools

Buttons & Bows Pre-School -  
833010 / 07483 942826

Sawtry Infant School - 830678

Sawtry Junior Academy - 830204

Sawtry Village Academy - 830701

## Emergency Numbers

Electricity 24hr Helpline &  
Emergencies - 0800 7 838 838

Gas 24hr Helpline & Emergencies -  
0800 111 999

Police (Non-Emergency) - 101

Samaritans Day/Night - 01733 312727

## Other Services

Cambs Bobby Scheme - 01480 413311

Cambs Libraries Contact Centre -  
0345 045 5225

Citizens Advice Bureau, Huntingdon -  
0344 245 1292

HACT (Community Transport) - 01480 411114

Huntingdon Delivery Office - 03457 740 740

Sawtry Social Club - 830462

Sawtry Old School Hall / Parish Council - 831771

Sawtry Post Office - 208460

Sawtry Sports & Leisure Association - 831797

Sawtry WI Hall - 07887 624639

Sawtry Youth & Community Centre - 831542

www.safelocaltrades.com - 0800 014 1832

## CARESCO

Car Scheme - 07810 476979

CARESCO Centre - 832105

Charity Shop - 208026

Community Support - 07873 187843

Green End Day Club - 07743 216746

Sawtry Foodbank - 07743 593863

The Cave - 07851 803482

If you would like to add a new number  
to the list or you have spotted a  
wrong number then let the  
CARESCO team know on 832105

**SAWTRY AREA CODE - 01487**